



## 14 Tramore Circle Burdell QLD

4  2  2 

Welcome to 14 Tramore Circle, Burdell - a modern family home set in the heart of the highly sought-after North Shore community.

Positioned on a generous 652m<sup>2</sup> block, this well-appointed residence delivers space, comfort, and practicality. Boasting four bedrooms, two bathrooms, and a double lock-up garage, the home is perfectly suited to investors seeking a quality property in a high-growth location.

Inside, the home offers a functional and flowing layout, with open-plan living and dining areas that connect seamlessly to the outdoor space- ideal for entertaining or everyday living. The bedrooms are well-sized, with a master suite featuring its own ensuite and built-in wardrobe.

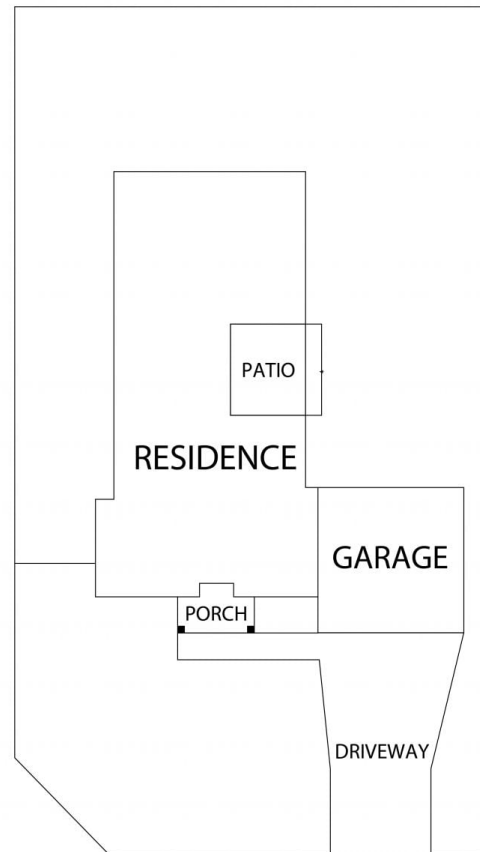
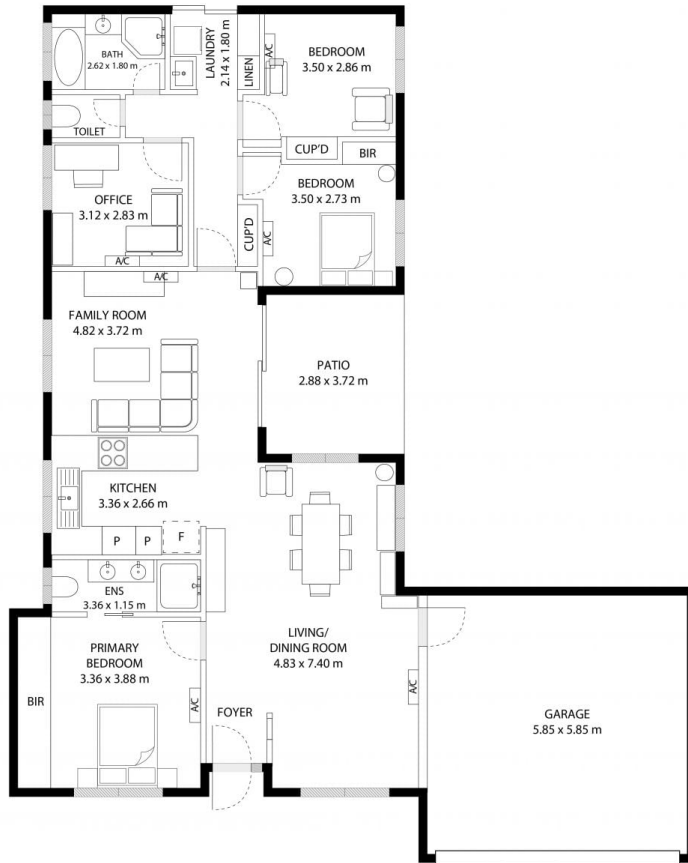
### Property Features:

- Four spacious bedrooms with built-in wardrobes
- Master bedroom with private ensuite
- Open-plan living and dining area
- Functional kitchen with ample storage
- Double lock-up garage

**Price** : OFFERS OVER \$740,000  
**Land Size** : 652 sqm  
**View** : <https://www.kingsberry.com.au/sale/qld/townsville-district/burdell/residential/house/8693286>



Anna Langston  
07 4772 2022  
0411 092 930  
[anna.langston@tsvharcourts.com.au](mailto:anna.langston@tsvharcourts.com.au)



14 Tramore Circuit, Burdell, QLD, 4818

TOTAL APPROX. FLOOR AREA 159 SQ.M

Whilst every attempt has been made to ensure the accuracy of the floor plan contained here, measurements of doors, windows, rooms and any other items are approximate and no responsibility is taken for any error, omission, or misstatement. This plan is for illustrative purposes only and should be used as such by any prospective purchaser.