

7 Bonnett Road Mount Low QLD

4  1  3 

Positioned on an expansive 5,438m² corner allotment in the highly sought-after suburb of Mount Low, this beautifully maintained lowset residence offers space, versatility, and a relaxed lifestyle with endless potential.

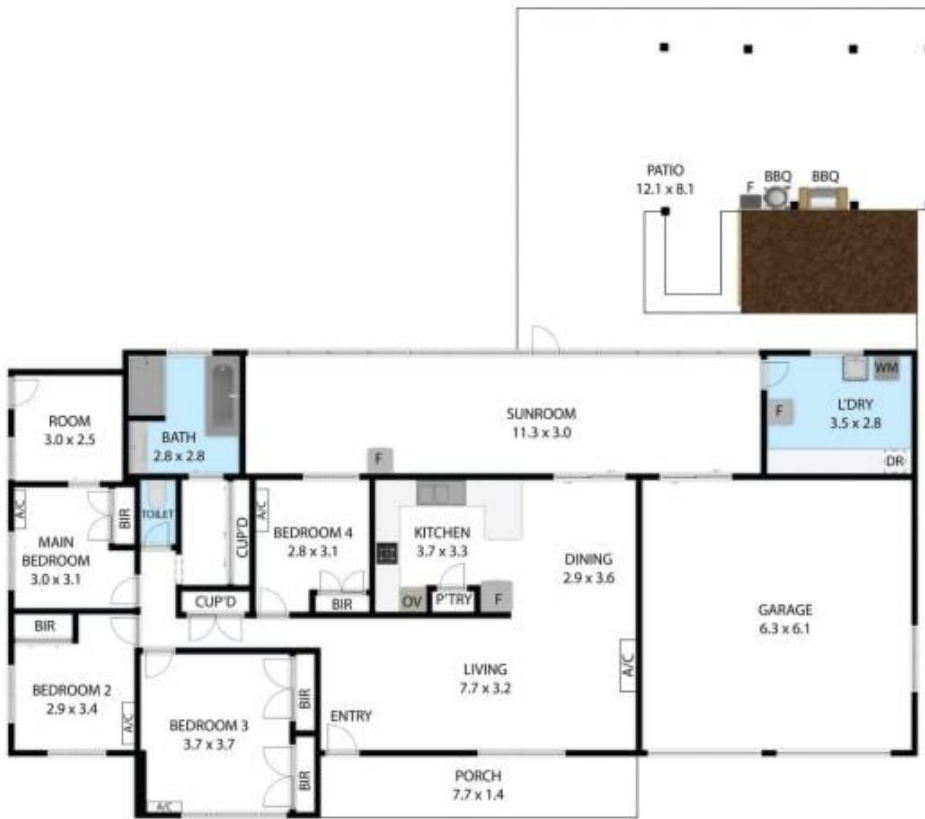
Price : Offers over \$825,000
Land Size : 5438 sqm
View : <https://www.kingsberry.com.au/sale/qld/townsville-district/mount-low/residential/house/8680282>

Property Features:

- Four generously sized bedrooms, all with built-in wardrobes, providing ample accommodation for the whole family.
- Light-filled large open-plan living and dining area flowing seamlessly to the 'U' shaped laminated kitchen.
- Tiled living areas with carpet to all bedrooms for added comfort.
- Stylish tiled bathroom featuring a large bathtub and walk-in shower
- Fully enclosed tiled rear sunroom with security screens, ideal for year-round relaxation.
- Split system air-conditioning throughout to ensure comfort in every season.
- Large 24 Panel Solar System to keep those energy bills down.
- Spacious internal laundry with ample storage and a



Rosalyn Gordon
07 4772 2022
0407 597 018
rosalyn.gordon@tsvharcourts.com.au



7 Bonnett Road, Mount Low, QLD, 4818

TOTAL APPROX. FLOOR AREA 214 SQM

Whilst every attempt has been made to ensure the accuracy of the floor plan contained here, measurements of doors, windows, rooms and any other items are approximate and no responsibility is taken for any error, omission, or misstatement. This plan is for illustrative purposes only and should be used as such by any prospective purchaser.