



23 Santal Drive Rasmussen QLD

4 2 2

Transcending you to a new level of exhilaration and evoking your senses to unparalleled heights, this spectacular residence flaunts an impressive array of features and flawlessly showcases magnificence on a grand scale. Sprawling across a manicured 1317m² allotment, complete with a glistening inground swimming pool, built in concrete BBQ and the most majestic African Mahogany Tree you have every seen, this property is the entertainers dream and undoubtedly the epitome of ultimate family living.

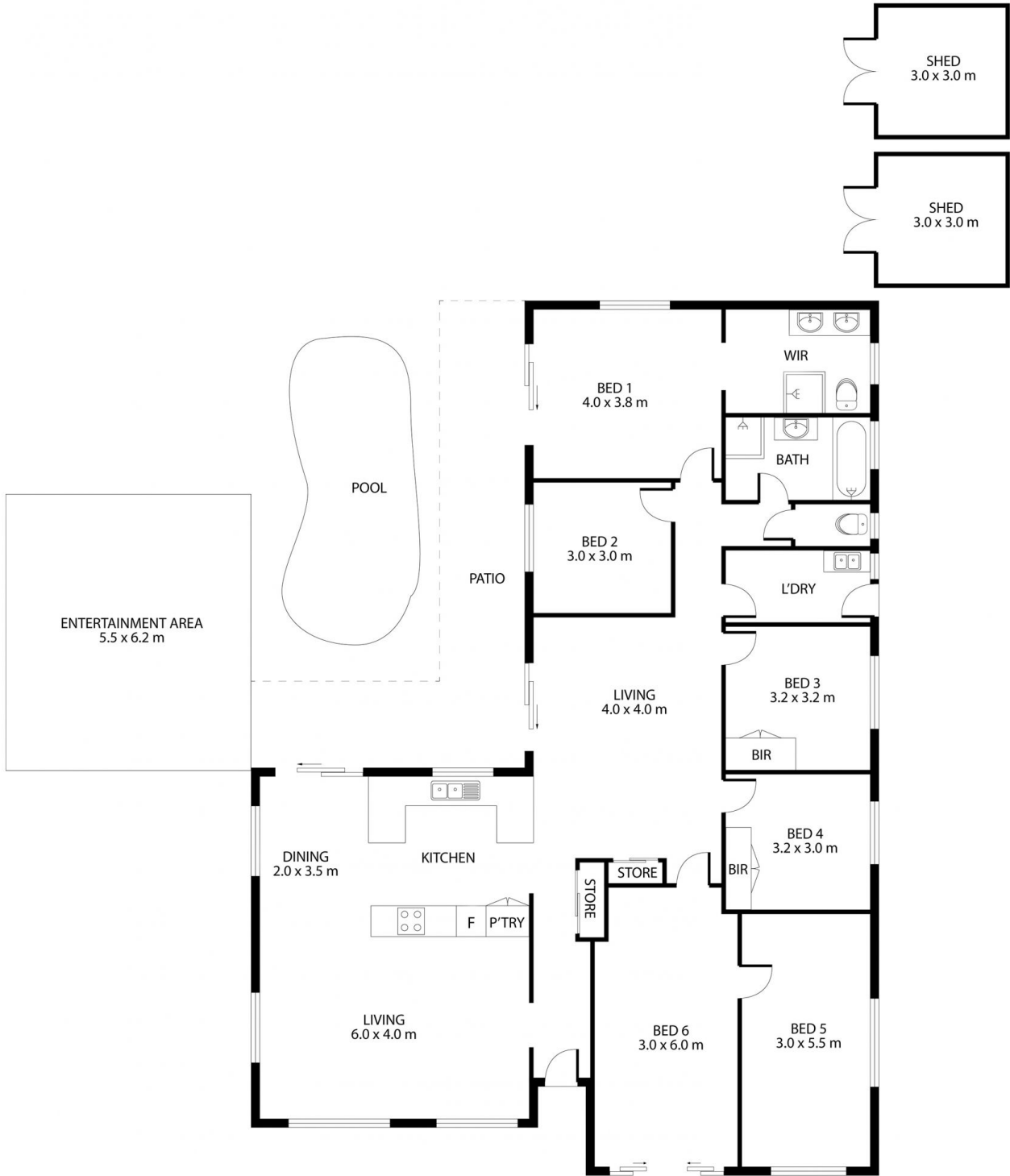
Boasting gracious eloquent class and brilliant creative flair along with functionality and warm comfort, one peek inside this showstopper and you'll be delighted by the exquisite details ready to satisfy your every desire. Inviting you into your own personal haven, the wide entryway leads you to different zones of the house, with two separate living areas, offering plenty of breakaway spaces for a large family.

Forming the central hub of the home the gourmet kitchen features ample bench space, a Westinghouse oven, ceramic cooktop, plumbed double fridge space, a microwave nook, dishwasher space, soft close drawers and

Price : \$ 550,000
Building Size : 248 sqm
Land Size : 1317 sqm
View : <https://www.kingsberry.com.au/sale/qld/townsville-district/rasmussen/residential/house/8011202>



Rae White
07 4772 2022
0406 538 448
rae.white@tsvharcourts.com.au



Scale in metres. Indicative only. Dimensions are approximate. All information contained herein is gathered from sources we believe to be reliable. However we cannot guarantee its accuracy and interested parties should rely on their own enquiries.

| | | |
|-------------------------|----------|--------------------------|
| RESIDENCE | - | 196 m ² |
| OUTDOOR | - | 34 m ² |
| SHED | - | 18 m ² |
| TOTAL UNDER ROOF | - | 248 m² |

23 Santal Dr, Rasmussen