

Harcourts Kingsberry



11/1 Hodel Street Rosslea QLD

2 2 1

On the market is this 2 bedroom 2 bathroom unit with 1 designated car space plus a lock up store-room, offering a contemporary lifestyle opportunity for the perceptive buyer. Views across Ross River are afforded from the balcony. The unit has a open plan design and features a compact kitchen overlooking the living areas, internal laundry with dryers and tiled floor coverings. The carpeted bedrooms have built in wardrobes. There is also undercover parking and a lockable store room. This 2 bedroom unit is located in a secure, gated complex and is situated just "around the corner" from the Townsville golf club. Residents have access to a large swimming pool/BBQ area surrounded by tropical gardens. Very easy access to the riverfront bike ways and walking tracks.

RATES: 01/01/2024 to 30/06/2024 gross rates half year includes water charges \$1,678.60

BODY CORPORATE: Administration 01/04/24 to 30/06/24

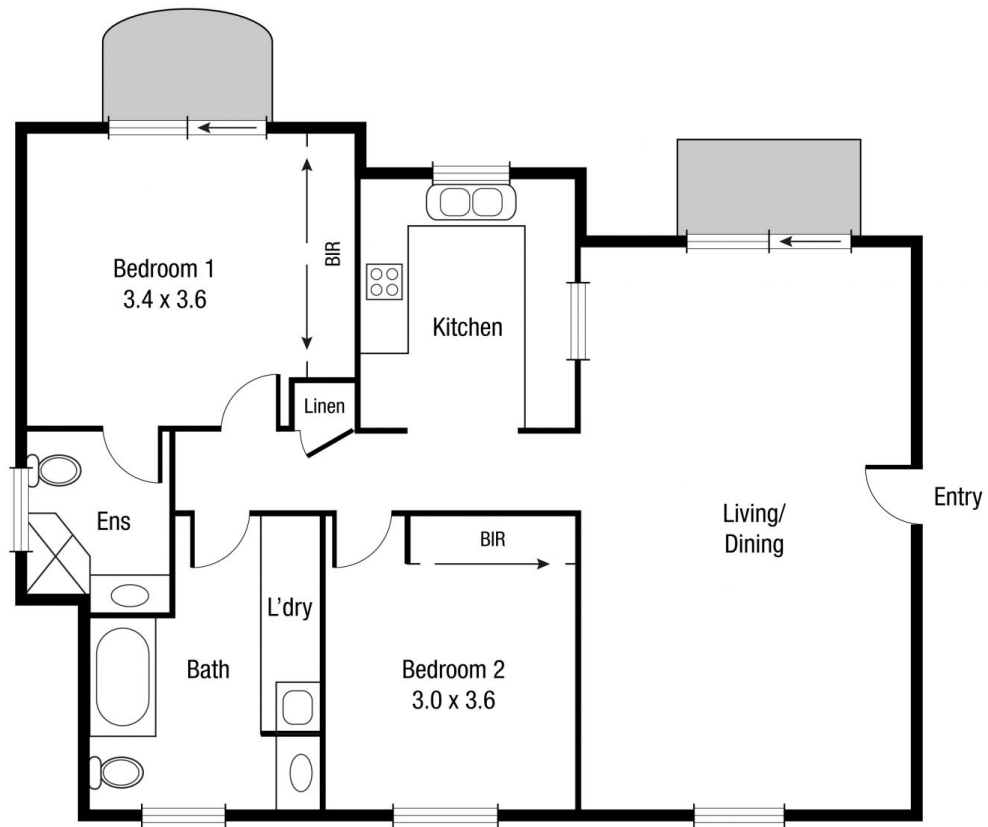
Price : \$ 235,000

View : <https://www.kingsberry.com.au/sale/qld/townsville-e-district/rosslea/residential/unit/7963097>



Loretta Fabbro
07 4772 2022
0408 997 766

loretta.fabbro@tsvharcourts.com.au



Scale in metres. Indicative only. Dimensions are approximate. All information contained herein is gathered from sources we believe to be reliable. However we cannot guarantee its accuracy and interested persons should rely on their own enquiries.

TOTAL AREA : 83.0 sq.m

11/1 Hodel