



1/50 Park Street Pimlico QLD

2  1  1 

This large, ground-floor unit is ideally located close to the Mater Hospital, Pimlico SHS, transport, and Castletown Shopping Centre. It is only a few minutes to The Strand, the CBD, restaurants, and entertainment precincts. Having been freshly painted inside and with new easy to clean floor coverings, it offers a convenient, quality lifestyle.

- Open plan, spacious living and dining area
- Modern kitchen with good cupboard space
- 2 generous size bedrooms with built-in wardrobes
- Split system air-conditioning in bedrooms
- Plentiful storage space
- Designated car parking

Price : \$ 237,000

View : <https://www.kingsberry.com.au/sale/qld/townsville-e-district/pimlico/residential/unit/7941824>

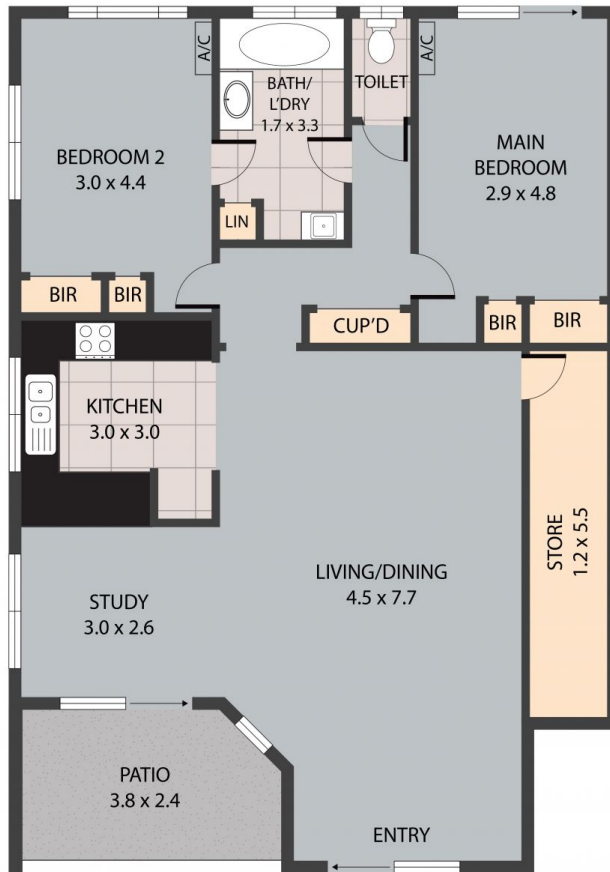


Malcolm Thomson

07 4772 2022

0400 545 664

malcolm.thomson@tsvharcourts.com.au



1/50 Park Street, Pimlico 4812

Whilst every attempt has been made to ensure the accuracy of the floor plan contained here, measurements of doors, windows, rooms and any other items are approximate and no responsibility is taken for any error, omission, or misstatement. This plan is for illustrative purposes only and should be used as such by any prospective purchaser.