

Harcourts Kingsberry



32 Swales Street Mundingburra QLD

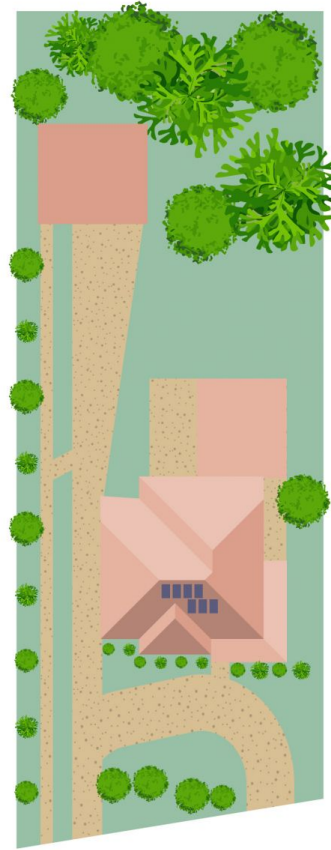
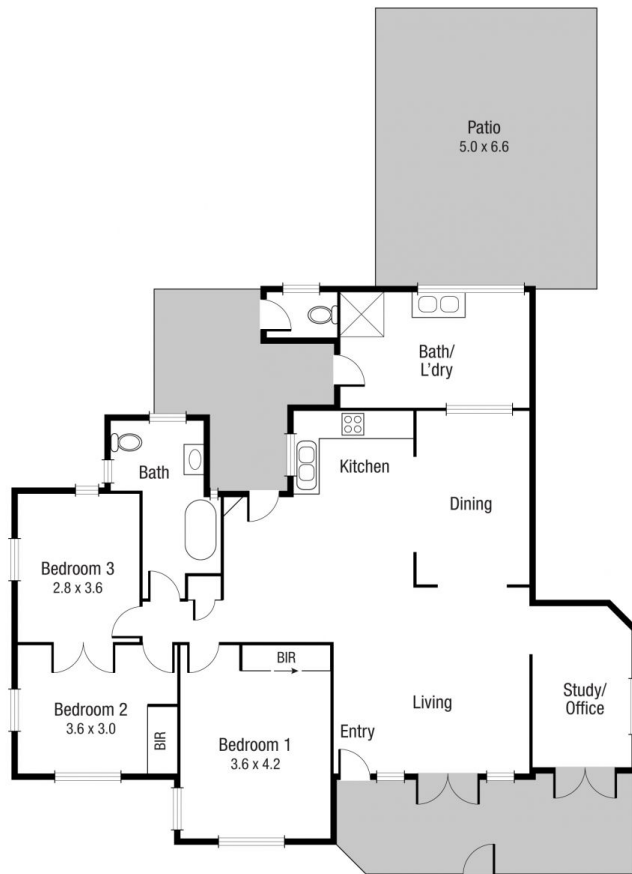
3 2 2

MUNDINGBURRA MAGIC Huge 1146M2 fully fenced block with magic big trees and a shed which is in need of some repairs. Recently painted exterior this is an older style home built in 1956 with 3 bedrooms plus office/games room, quality timber kitchen, polished floors, sleek white bathroom and enclosed front porch plus a very spacious laundry with 2nd shower and toilet. Massive covered BBQ/entertaining area which also be used to park two vehicles under cover. It has a U-shape drive through at the front of the house for easy parking. Under ground water and bore which needs to be reinstated, plus solar too. A must to see in this most sought after area close to good schools minutes to the ever popular Cathedral Private School, around the corner from St. Joseph's Private School and Mundingburra State School. Located a short drive to Stockland/Myers shopping, the University, Hospital and Army.

Price : \$ 460,000
Land Size : 1146 sqm
View : <https://www.kingsberry.com.au/sale/qld/townsville-district/mundingburra/residential/house/7938319>



Loretta Fabbro
07 4772 2022
0408 997 766
loretta.fabbro@tsvharcourts.com.au



Scale in metres. Indicative only. Dimensions are approximate. All information contained herein is gathered from sources we believe to be reliable. However we cannot guarantee its accuracy and interested persons should rely on their own enquiries.

TOTAL AREA : 180.9 sq.m

32 Swales St, Mundingburra