

# Harcourts Kingsberry



## 33 Clayton Street Hermit Park QLD

3 2 2

Welcome to 33 Clayton Street Hermit Park, this extraordinary transformation from originally St Andrew's Church to an astonishing home. It will truly take you breath away?.

When you step through the front gate you instantly feel the welcoming ambience and know that you are walking into something special.

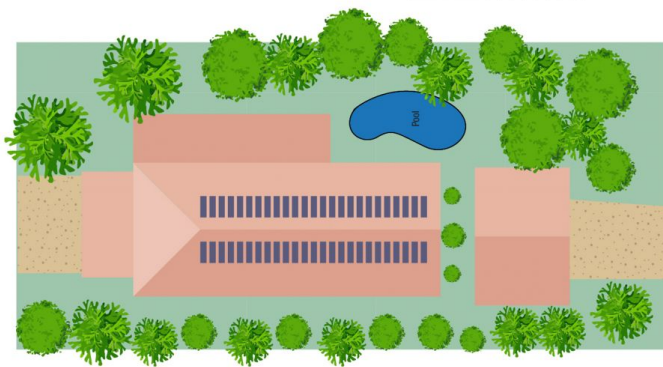
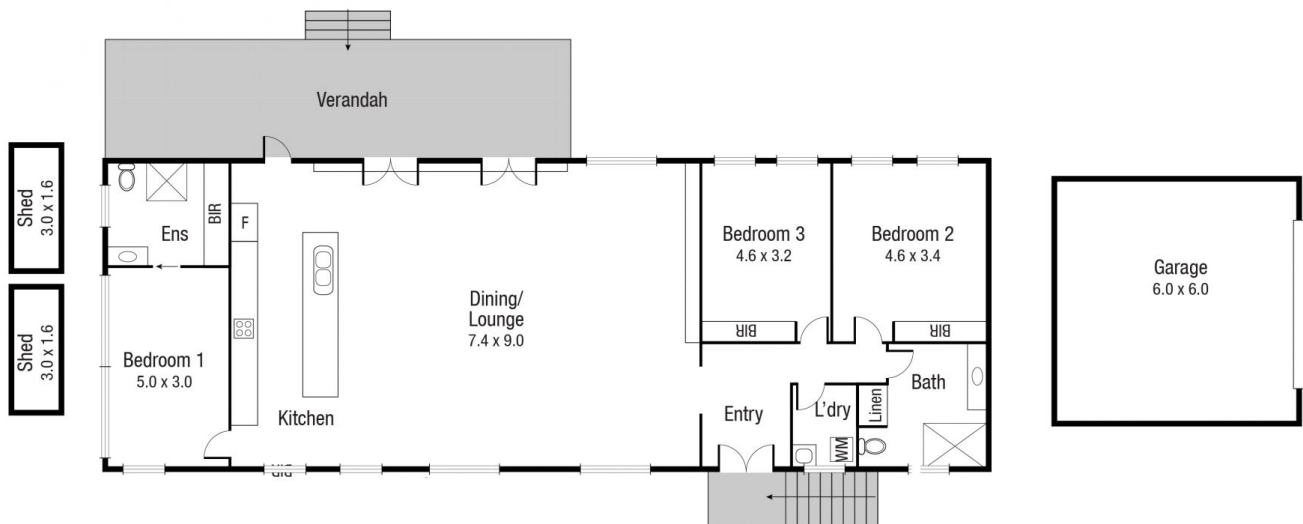
Tastefully renovated interiors hold classic appeal, combining traditional soaring ceilings, stained glass arched windows, tongue and groove walls and timber floors alongside modern inclusions blend to deliver a stylish residence.

Soak up the sensational kitchen - guarantee to serve up a treat fringed by large french doors opening onto the vast verandah - here you can entertain all year round. The Sellers have shared countless events, including music evenings, circle dancing with over 50 people, birthdays,

**Price** : \$ 720,000  
**Land Size** : 809 sqm  
**View** : <https://www.kingsberry.com.au/sale/qld/townsville-district/hermit-park/residential/house/7908709>



Tammy Tyrrell  
07 4772 2022  
0412 534 704  
[tammy.tyrrell@tsvharcourts.com.au](mailto:tammy.tyrrell@tsvharcourts.com.au)



Scale in metres. Indicative only. Dimensions are approximate. All information contained herein is gathered from sources we believe to be reliable. However we cannot guarantee its accuracy and interested persons should rely on their own enquiries.

TOTAL AREA :211.8sq.m

33 Clayton