

# Harcourts Kingsberry



## 15 Church Street West End QLD

3 1 2

Sitting pretty in a sought-after location lies this radiant residence retaining its lovely characteristics. Combining original inclusions plus a blend of modernised upgrades delivers a delightful private retreat.

Upon entry, you will be greeted by immaculate glorious gardens perfect place to unwind and entertain under the stars.

Upstairs continues to shine with three bedrooms, master complete with built in robe and split air-conditioning. The remaining bedrooms offering air-conditioning as well as timber floors. An additional room, decent in size, ideal for a 4th bedroom or home office.

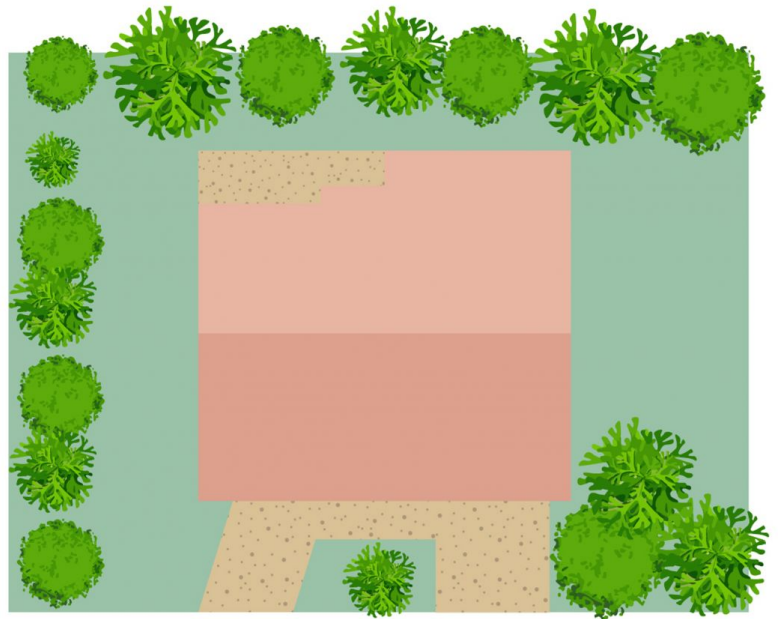
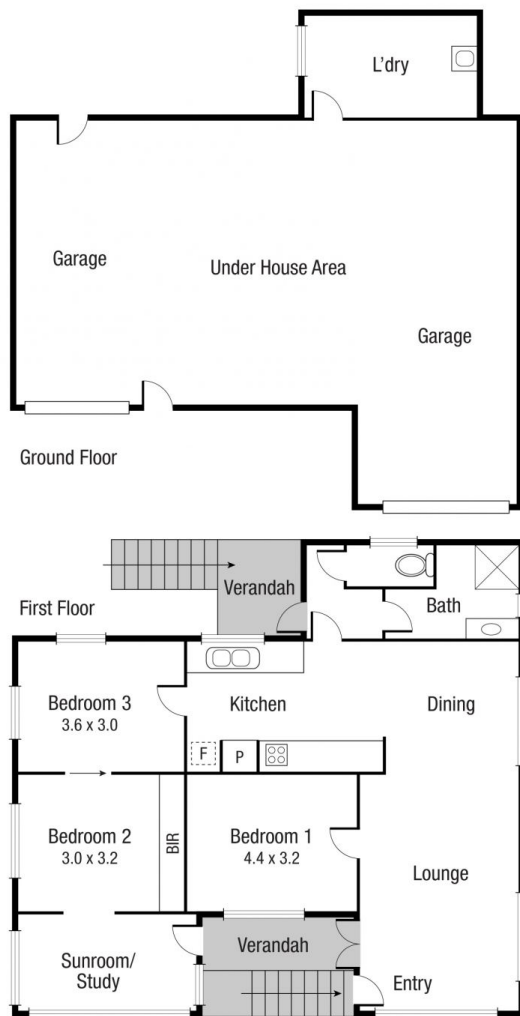
The spacious kitchen is the heart of the home, recently upgraded with plenty of cupboard and bench space. The adjoining dining area and separate living showcases large windows capturing plenty of light and breezes.

The master bathroom has been renovated, highlighting

**Price** : \$ 550,000  
**Land Size** : 506 sqm  
**View** : <https://www.kingsberry.com.au/sale/qld/townsville-district/west-end/residential/house/7900993>



Tammy Tyrrell  
07 4772 2022  
0412 534 704  
[tammy.tyrrell@tsvharcourts.com.au](mailto:tammy.tyrrell@tsvharcourts.com.au)



Scale in metres. Indicative only. Dimensions are approximate. All information contained herein is gathered from sources we believe to be reliable. However we cannot guarantee its accuracy and interested persons should rely on their own enquiries.

**TOTAL AREA : 187.0 sq.m**

**15 Church St, West End**