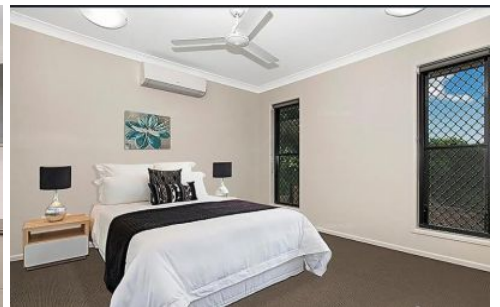


# Harcourts Kingsberry



## 7 Moondani Close Douglas QLD

4 2 2

This modern home presents the ideal opportunity for an investor (fixed lease until June 2024) or homeowner. Contemporary appealing designed for relaxed living and the busy working family in mind. The kitchen is the hub of the home providing easy access to the dining and outdoor entertaining area - here you can imagine sitting on the deck enjoying your morning coffee or dining with friends surrounded by hill views - perfect back drop for all occasions.

Four good sized air-conditioned bedrooms with the main bedroom complete with ensuite and built in robe. The main bathroom is fresh with neutral tones and features separate bath and shower.

This stylish home is located at the end of a quiet court with hill views - its sure to delight.

- Perfect deck dining

**Price** : \$ 560,000  
**Land Size** : 681 sqm  
**View** : <https://www.kingsberry.com.au/sale/qld/townsville-district/douglas/residential/house/7884275>



Tammy Tyrrell  
07 4772 2022  
0412 534 704  
[tammy.tyrrell@tsvharcourts.com.au](mailto:tammy.tyrrell@tsvharcourts.com.au)