



81 Cypress Drive Annandale QLD

3 1 2

Primely positioned in the highly sought after and family friendly suburb of Annandale, this exquisite residence has been beautifully revitalized and is destined to impress. Perched atop a lush 702m² corner allotment, with double gate side access, this property is brilliantly proportioned to deliver an unparalleled living experience.

As you step into this stunning home, you'll be greeted by a sense of sophistication and modernity. Upon entering, one is immediately captivated by the spaciousness and seamless flow of the interiors. Offering a versatile floorplan with three distinct living spaces, the central area presents a flexible canvas, easily transformable into a fourth bedroom, study, formal dining room, or even a butler's pantry to suit your individual needs.

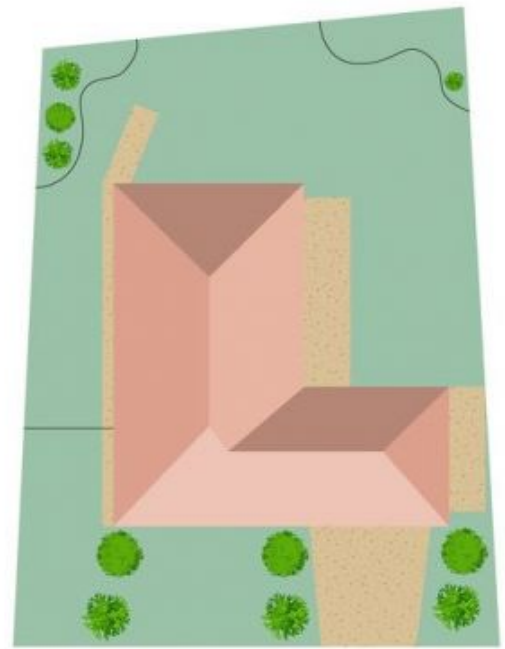
The entire property has been freshly painted inside and out, creating a crisp and welcoming atmosphere. Adding a touch of luxury, brand new plush carpet and window tinting have been installed throughout.

At the heart of the home lies the well-appointed, renovated kitchen, serving as the central hub for family gatherings

Price : \$ 515,000
Building Size : 200.9 sqm
Land Size : 702 sqm
View : <https://www.kingsberry.com.au/sale/qld/townsville-district/annandale/residential/house/7882334>



Rae White
07 4772 2022
0406 538 448
rae.white@tsvharcourts.com.au



Scale in metres. Indicative only. Dimensions are approximate. All information contained herein is gathered from sources we believe to be reliable. However we cannot guarantee its accuracy and interested persons should rely on their own enquiries.

TOTAL AREA : 200.9 sq.m