

Harcourts Kingsberry



12 Summerfield Street Hermit Park QLD

3 1 2

Sitting sweet in a sought-after location lies this classic, much-loved home, retaining its lovely characteristics. Combining modern and original inclusions with striking timber floorboards, plus a blend of modernised upgrades, delivering a delightful retreat.

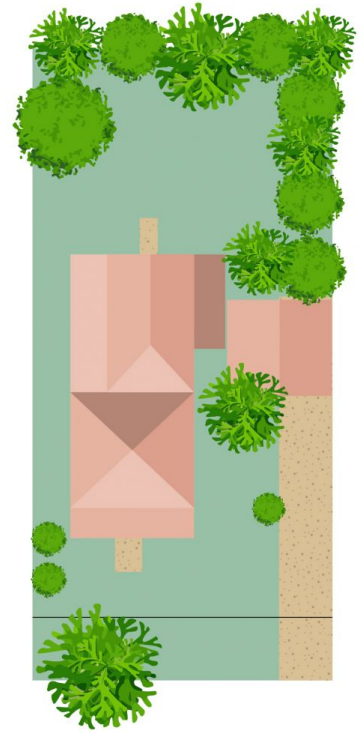
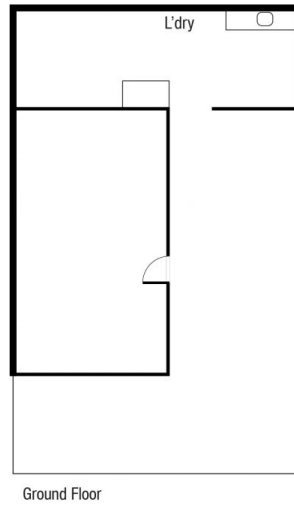
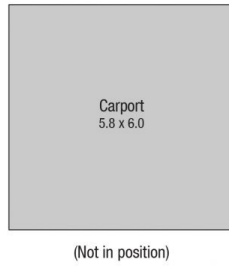
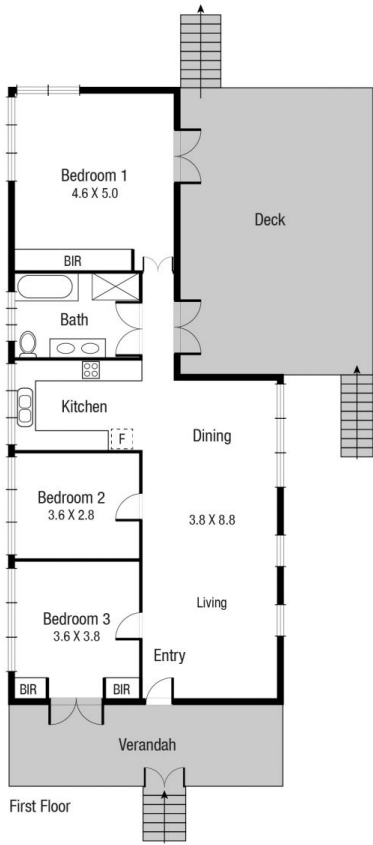
Upon entry you will be greeted by the relaxing front verandah - ideal spot for your morning cuppa. Flair and style continue to shine, showcasing a welcoming living room framed by plantation shutters offering an abundance of light and breezes. The galley kitchen is tucked away featuring ample of cupboard and bench space alongside gas cooking, conveniently adjoining the dining area.

The generous master bedroom presents a built-in robe with space to add an ensuite. The remaining bedrooms all feature air-conditioning to offer year-round comfort. The stylish bathroom is sure to impress showcasing claw bath with separate shower recess.

Price : \$ 565,000
Land Size : 809 sqm
View : <https://www.kingsberry.com.au/sale/qld/townsville-district/hermit-park/residential/house/7809465>



Tammy Tyrrell
07 4772 2022
0412 534 704
tammy.tyrrell@tsvharcourts.com.au



Scale in metres. Indicative only. Dimensions are approximate. All information contained herein is gathered from sources we believe to be reliable. However we cannot guarantee its accuracy and interested persons should rely on their own enquiries.

TOTAL AREA : 251.02 sq.m

12 Summerfield