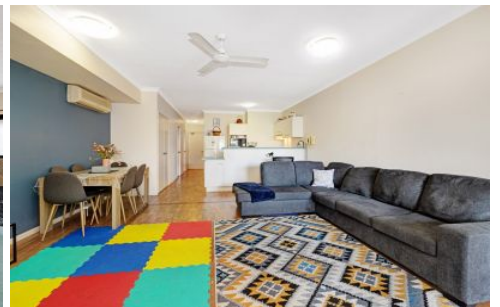


Harcourts Kingsberry



19/33-35 McIlwraith Street South Townsville QLD

2  **1**  **1** 

LOCATION, LOCATION, LOCATION!!

This stunning two-bedroom unit is right in the heart of the city, on the second floor of the 'McIlwraith Place' complex, which is conveniently within walking distance to the Queensland Country Bank Stadium, multiple restaurants and hotels, and only a few minutes drive from the Strand!

The unit features two large bedrooms all fitted with ceiling fans, air conditioning, and built-in wardrobes. The master bedroom has its own access to the spacious and private deck, perfect for having guests over for a wine and dine evening to enjoy the views!

The complex has remote access gates for vehicles and lock and key access to the pedestrian gates, keeping the complex and residents' belongings safe and secure. There

Price : \$ 210,000

View : <https://www.kingsberry.com.au/sale/qld/townsville-e-district/south-townsville/residential/unit/7799914>



Jayden Evans

07 4772 2022

0477 543 617

jayden.evans@tsvharcourts.com.au

<https://www.kingsberry.com.au>

210 Charters Towers Road Hermit Park QLD
07 47 722 022