

Harcourts Kingsberry



6 Pomelo Street Jensen QLD

4 2 6

This immaculate home with great street appeal certainly stands out from the rest. Positioned on a generous sized 1150m² elevated block in the newly established Orchard Estate.

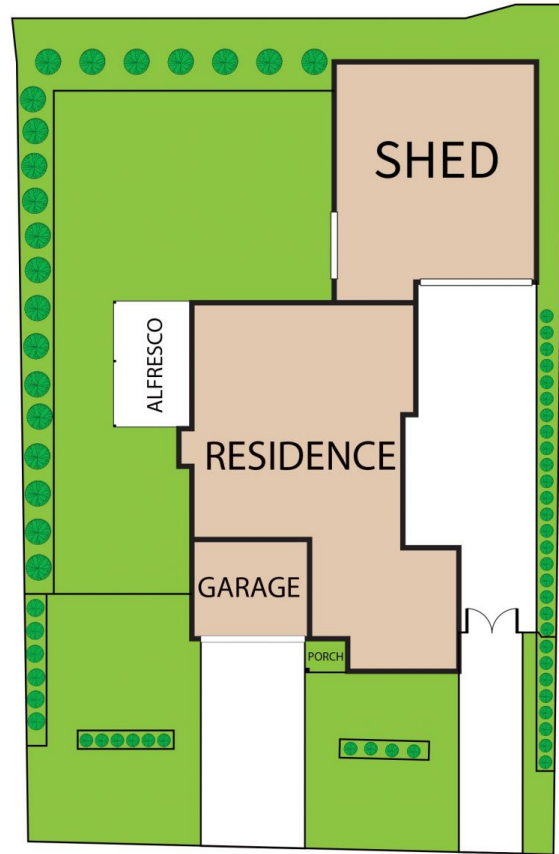
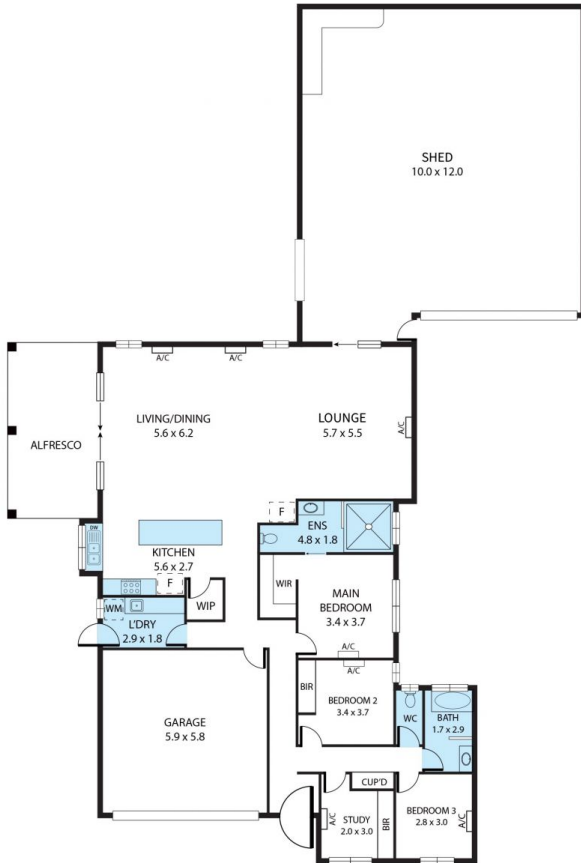
As you enter through the large timber door you are greeted by a welcoming foyer and the light and airy feel. Open plan living and dining area served from a fully equipped kitchen offering plenty of cupboard space, pot draws, pantry, double sink, 900mm dual fuel standalone oven/stovetop, dishwasher, breakfast bar and walkin pantry.

Three out of the four bedrooms have double builtin robes whilst the king sized master bedroom includes a walkin robe and ensuite with his & hers showers The main bathroom located central to the other bedrooms has a plunge bath and separate shower. The fourth

Price : \$ 780,000
Land Size : 1150 sqm
View : <https://www.kingsberry.com.au/sale/qld/townsville-district/jensen/residential/house/7738421>



Mario Torrisi
07 4772 2022
0407 636 259
mario.torrisi@tsvharcourts.com.au



6 Pomelo Street, Jensen 4818

TOTAL APPROX. FLOOR AREA 314 SQ.M

Whilst every attempt has been made to ensure the accuracy of the floor plan contained here, measurements of doors, windows, rooms and any other items are approximate and no responsibility is taken for any error, omission, or misstatement. This plan is for illustrative purposes only and should be used as such by any prospective purchaser.