

Harcourts Kingsberry



47/14-24 Henry Street West End QLD

3  2  1 

'Westend Apartments' Fantastic location, live on the fringe of the Townsville CBD. Reap the benefits of this lovely unit, offering the lifestyle that you deserve. The perfect property to add to your investment portfolio!

Price : \$ 323,000
Building Size : 151 sqm
View : <https://www.kingsberry.com.au/sale/qld/townsville-district/west-end/residential/apartment/7687562>

****TENANTED until October at \$460 per week****

Features of 'YOUR' new abode

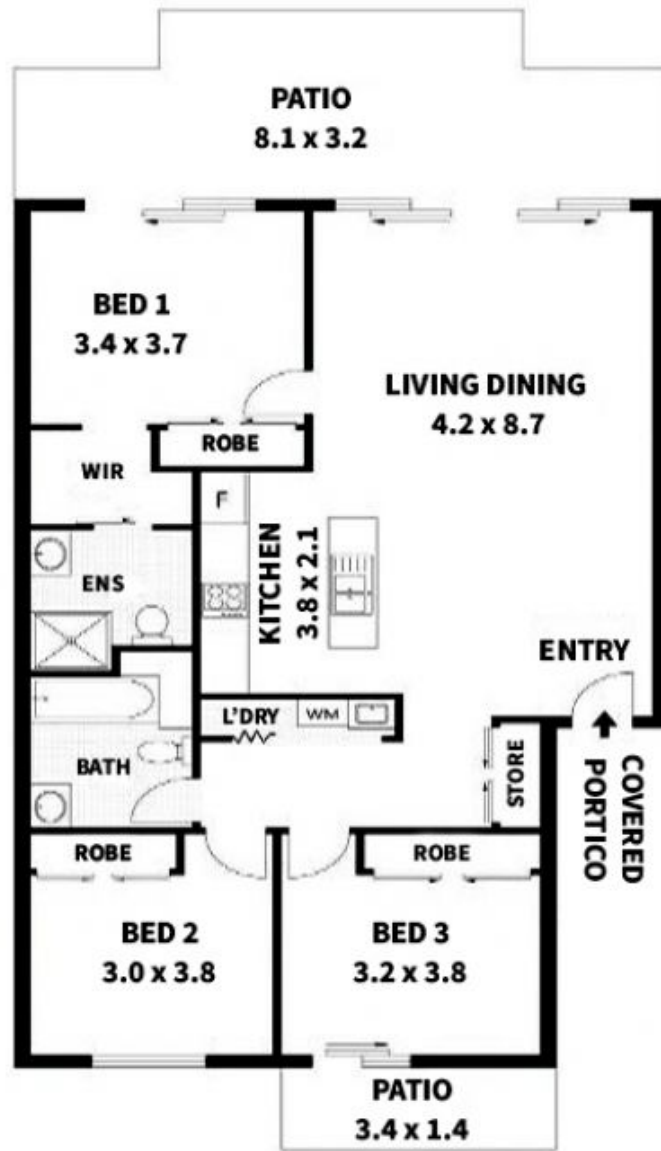
- Perfectly located on the ground floor over looking glorious gardens and pool with direct access
- Beautifully appointed finishes throughout
- Master bedroom with walk through robe and modern ensuite, opening onto patio overlooking pools and lush tropical gardens
- Open plan living, well equipped kitchen with ample bench and storage space
- Split system air conditioners throughout plus ceiling fans



Stephanie Turnbull
07 4772 2022
0459 528 095
stephanie.turnbull@tsvharcourts.com.au

<https://www.kingsberry.com.au>

210 Charters Towers Road Hermit Park QLD
07 47 722 022



Scale in metres. Indicative only. Dimensions are approximate. All information contained herein is gathered from sources we believe to be reliable. However we cannot guarantee its accuracy and interested parties should rely on their own enquiries.

104m²
27m²

47/14 - 24 Henry Street, West end