

Harcourts Kingsberry



24 Crake Circuit Oonoonba QLD

4  3  2 

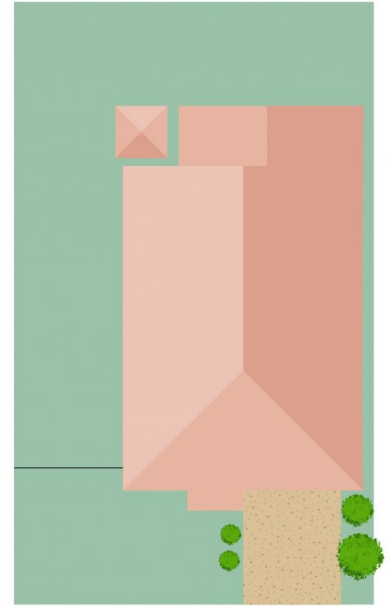
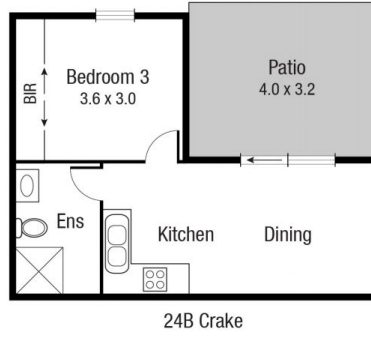
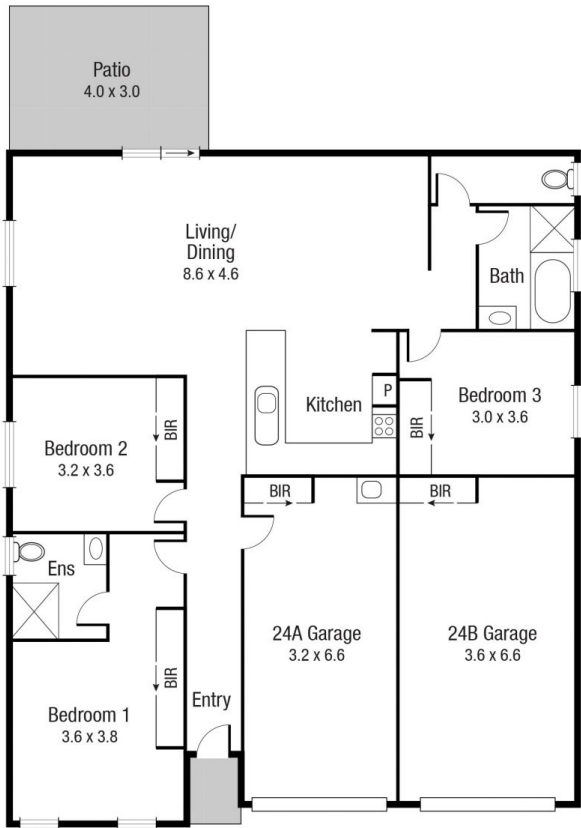
Positioned on a 642sqm block minutes to the Townsville CBD, this low-maintenance duplex on one title offers the incoming owner countless options in a great location. Whether you're looking for a set and forget investment in an extremely tight rental market or looking to have the entire family under the one roof, whilst still maintaining space and privacy, then look no further than this neat and tidy opportunity.

Neat and tidy throughout, both residences feature neutral tones and easy-care living areas accompanied with low-maintenance outdoor spaces. Both residences are vacant with brand new carpets in all bedrooms making it move in or rent out ready. For investors, the incoming owner will enjoy the benefits of a tight rental market with potential returns of up to \$780 per week.

Price : \$ 557,000
Land Size : 642 sqm
View : <https://www.kingsberry.com.au/sale/qld/townsville-district/oonoonba/residential/semi-detached/7656806>



Adrian Raiteri
07 4772 2022
0427 673 612
adrian.raiteri@tsvharcourts.com.au



Scale in metres. Indicative only. Dimensions are approximate. All information contained herein is gathered from sources we believe to be reliable. However we cannot guarantee its accuracy and interested persons should rely on their own enquiries.

24 Crake