

Harcourts Kingsberry



2 Mendi Drive Bushland Beach QLD

4 2 2

Positioned on a large 1,059sqm block minutes' walk to shops and the beach, this immaculately presented block family home has just undergone a complete freshen up leaving the incoming owner with nothing more to do than to move the furniture straight in.

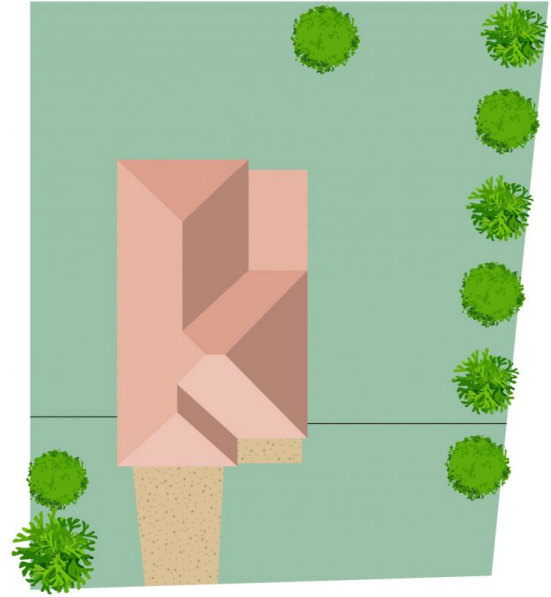
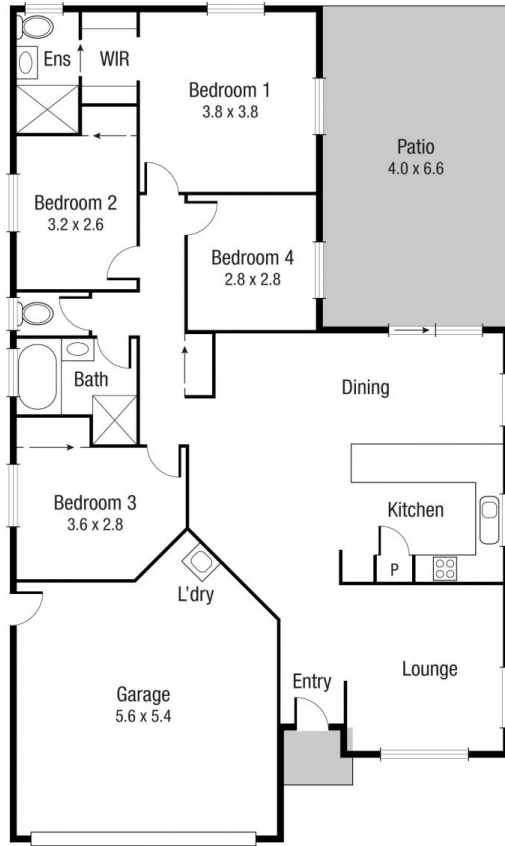
The low maintenance residence has just been freshly painted inside and out and features a central kitchen overlooking the combined living/dining area and large covered patio. There is also a separate living room for the whole family to sprawl out. Down the central hallway you'll find four bedrooms, three of which are complete with cooling and built in robes. The master bedroom is positioned at the back of the home and features a walk-through robe and private ensuite.

Being positioned on a 1,059sqm block, the fully fenced

Price : \$ 477,500
Land Size : 1059 sqm
View : <https://www.kingsberry.com.au/sale/qld/townsville-district/bushland-beach/residential/home/7625851>



Adrian Raiteri
07 4772 2022
0427 673 612
adrian.raiteri@tsvharcourts.com.au



Scale in metres. Indicative only. Dimensions are approximate. All information contained herein is gathered from sources we believe to be reliable. However we cannot guarantee its accuracy and interested persons should rely on their own enquiries.

2 Mendi Dr, Bushland Beach