

Harcourts Kingsberry



59 Spinifex Way Bohle Plains QLD

3  2  4 

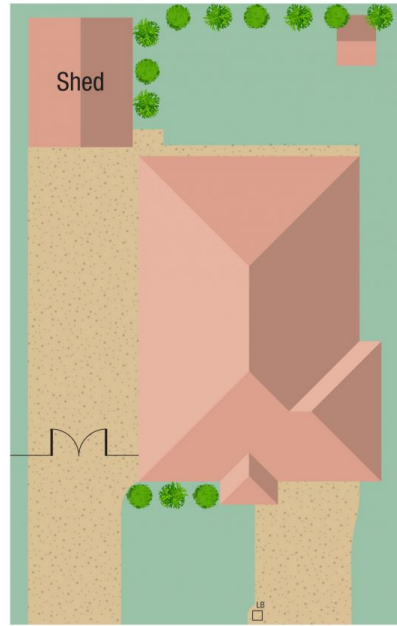
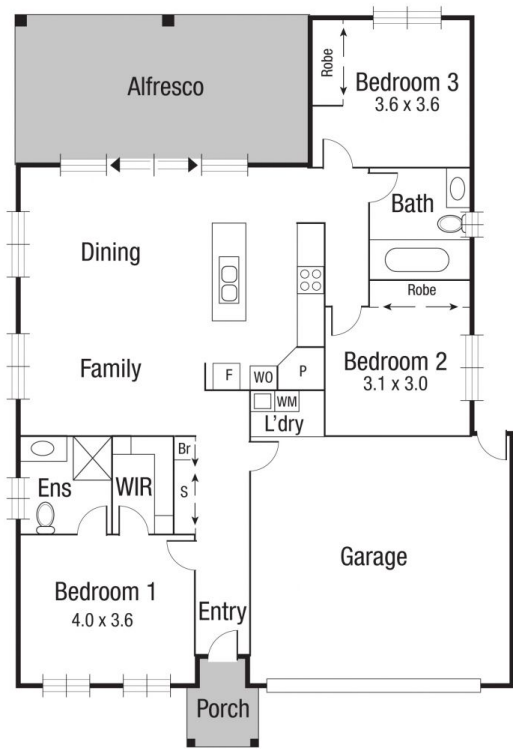
Welcome to a life with no compromises. This stunning home combines contemporary design, high end features, and a spacious double bay powered shed that will fulfil all your storage and hobby needs. Here is your opportunity to indulge in a perfect blend of style and functionality.

The modern residence was built by Case Homes in 2016 to reflect modern family living. The home boasts three generous bedrooms with built-in robes and split system cooling along with two sleek bathrooms. The beautiful kitchen boasts quality SMEG oven and gas cooktop, stone benchtops, and enough cupboard space to house all your cooking equipment. It is centrally positioned overlooking the open living/dining area that flows effortlessly onto the large covered alfresco area where you can entertain to your heart's content.

Price : \$ 475,000
Land Size : 673 sqm
View : <https://www.kingsberry.com.au/sale/qld/townsville-district/bohle-plains/residential/house/7616040>



Adrian Raiteri
07 4772 2022
0427 673 612
adrian.raiteri@tsvharcourts.com.au



Scale in metres. Indicative only. Dimensions are approximate. All information contained herein is gathered from sources we believe to be reliable. However we cannot guarantee its accuracy and interested persons should rely on their own enquiries.

59 Spinifex Way, Bohle Plains