

Harcourts Kingsberry



2 Cutler Court Mount Louisa QLD

3  1  1 

For connoisseurs of great taste and distinguished family comfort, this polished high-set home has undergone a makeover from top to toe. So if you've been waiting patiently for the perfect blend of style and functionality, in a restful location.. then your patience has been rewarded.

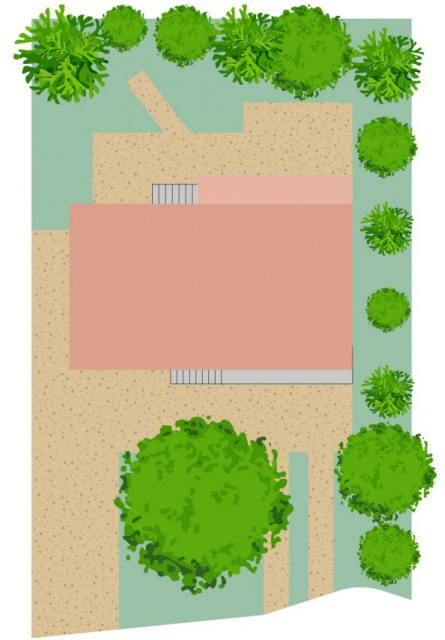
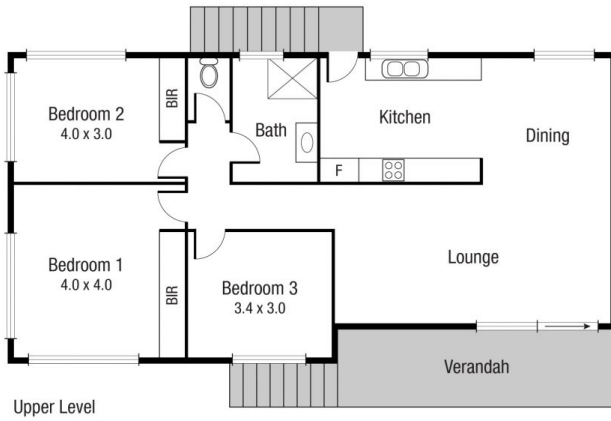
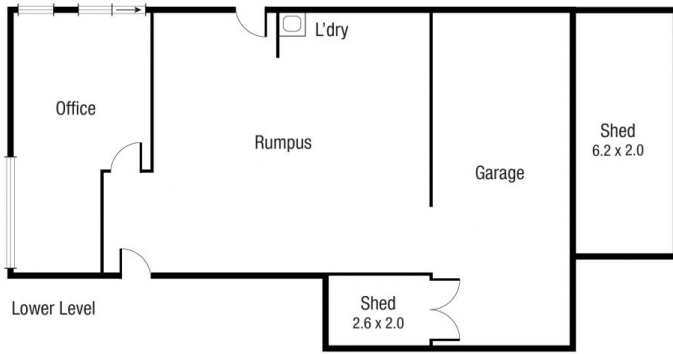
Step into the high-set home and discover a stunning colour-palette contrasting against polished wooden floors. The bathroom and kitchen is brand new and has been designed with elegance to serve your family for years to come. Be naturally drawn to the refreshing floor-plan that presents you with a whole new world of versatility.

Positioned in a quiet no-through street and perched on a fully fenced 660sqm block, this property represents incredible value without compromising on proximity to modern day conveniences.

Price : \$ 387,500
Land Size : 660 sqm
View : <https://www.kingsberry.com.au/sale/qld/townsville-district/mount-louisa/residential/house/7562553>



Adrian Raiteri
07 4772 2022
0427 673 612
adrian.raiteri@tsvharcourts.com.au



Scale in metres. Indicative only. Dimensions are approximate. All information contained herein is gathered from sources we believe to be reliable. However we cannot guarantee its accuracy and interested persons should rely on their own enquiries.

TOTAL AREA : 217.1 sq.m

2 Cutler Ct, Mount Louisa