



## 14 Signature Drive Rosslea QLD

4 2 2

From the moment you enter this award-winning ex-display home, you'll be captivated by every aspect and angle of this prestigious family home that has been crafted to the highest of standards. Tucked away in the exclusive Fairways Estate at Townsville Golf Course on a generous 643sqm allotment, owning this property will provide you and your family with the lifestyle that you've yearned for, and most can only dream of.

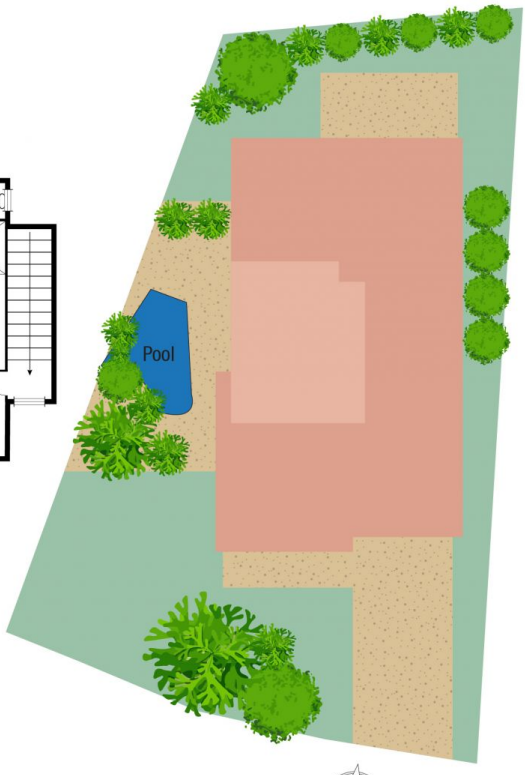
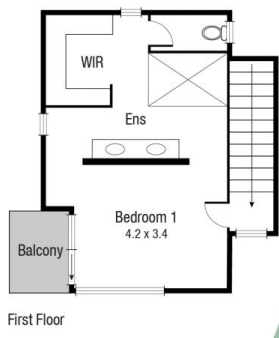
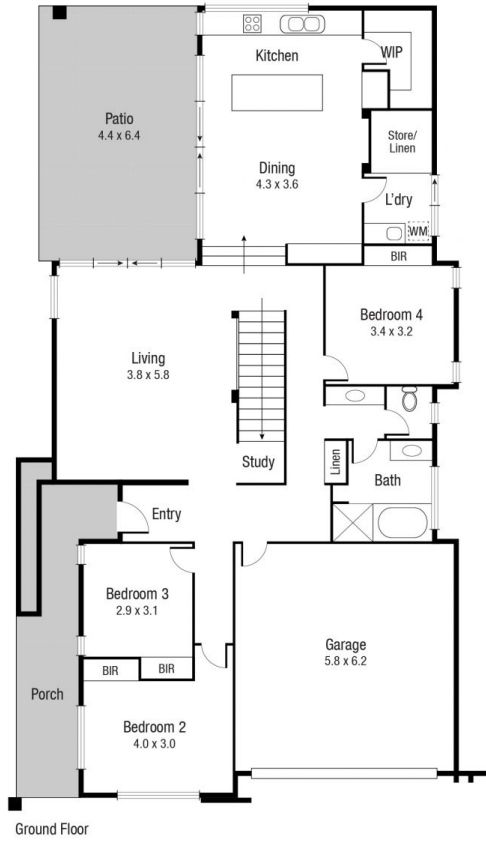
Constructed by Proview Homes, the residence offers a show-stopping parents escape upstairs highlighting an intimate patio with Golf Course views accompanied with a stylish ensuite. The remaining three bedrooms are located downstairs complete with built-in robes and split-system cooling. Downstairs also offers a study nook and a large family room with striking black bamboo floors, offering enough space for the family to sprawl out.

The kitchen is a true masterpiece and offers quality Smeg Appliances including side by side ovens, marble benchtops, glass splashback, large island bench and a walk-in pantry. The kitchen is perfectly positioned to incorporate seamless entertaining with stacker doors

**Price** : \$ 897,500  
**Land Size** : 643 sqm  
**View** : <https://www.kingsberry.com.au/sale/qld/townsville-district/rosslea/residential/house/7554272>



Adrian Raiteri  
07 4772 2022  
0427 673 612  
[adrian.raiteri@tsvharcourts.com.au](mailto:adrian.raiteri@tsvharcourts.com.au)



Scale in metres. Indicative only. Dimensions are approximate. All information contained herein is gathered from sources we believe to be reliable. However we cannot guarantee its accuracy and interested persons should rely on their own enquiries.

**TOTAL AREA : 295.9 sq.m**

## 14 Signature