

# Harcourts Kingsberry



## 22 Burlingon Circuit Mount Louisa QLD

3 2 2

Are you in the search for a spacious and comfortable family home in the sought-after suburb of Mount Louisa? Look no further than this low maintenance residence sitting proudly on a fully fenced 700sqm block.

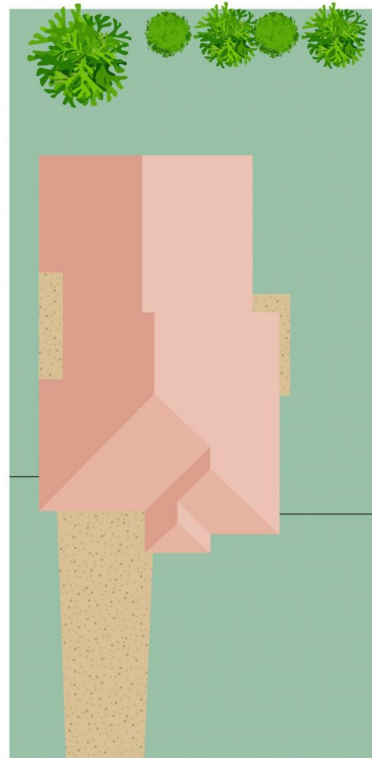
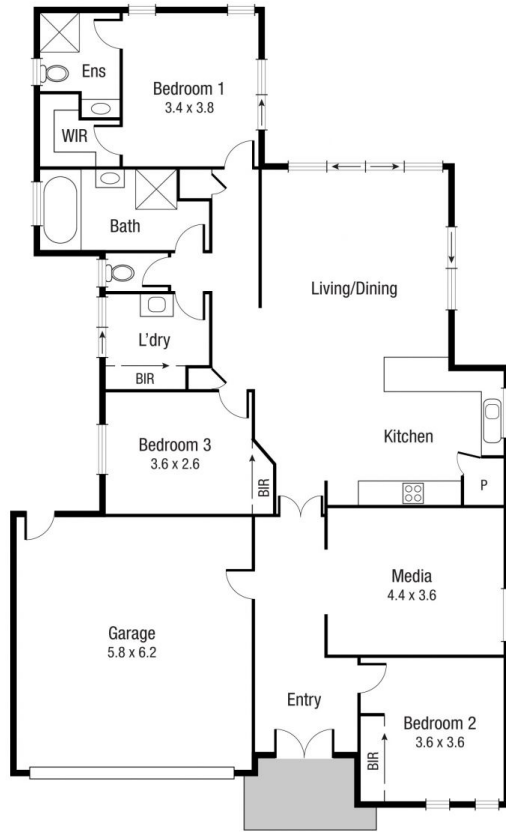
This fully air-conditioned block home features a central kitchen overlooking the combined living/dining area that flows effortlessly onto the covered alfresco area. The master bedroom and bedroom 2 come off a central hallway and feature split system cooling and robes whilst Bedroom 3 and the large family room are located at the front of the home and isolated from the rest of the home via double doors. There is also a double garage for car storage and double gate side access offering enough room for the boat and caravan.

Features on Offer:

**Price** : \$ 429,000  
**Land Size** : 700 sqm  
**View** : <https://www.kingsberry.com.au/sale/qld/townsville-district/mount-louisa/residential/house/7481720>



Adrian Raiteri  
07 4772 2022  
0427 673 612  
[adrian.raiteri@tsvharcourts.com.au](mailto:adrian.raiteri@tsvharcourts.com.au)



Scale in metres. Indicative only. Dimensions are approximate. All information contained herein is gathered from sources we believe to be reliable. However we cannot guarantee its accuracy and interested persons should rely on their own enquiries.

## 22 Burlington Cct, Mount Louisa