

Harcourts Kingsberry



23 Baxendell Place Bushland Beach QLD

6 2 2

Seeking a large family to fill this magnificent 2 storey home which sits in an elevated position with panoramic ocean and island views. With a massive 362sqm under roof plus a separate 4x7m approx shed there is heaps of room for harmonious family living plus the added potential to adapt for dual occupancy. A perfect solution for the extended family.

Price : \$ 654,000
Building Size : 362 sqm
Land Size : 1061 sqm
View : <https://www.kingsberry.com.au/sale/qld/townsville-district/bushland-beach/residential/house/7321167>

Freshly upgraded with interior paint and new carpets plus the added bonus of bird attracting gardens with no lawns to mow, this is a 'move in ready' home where a relaxed tropical family lifestyle is assured.



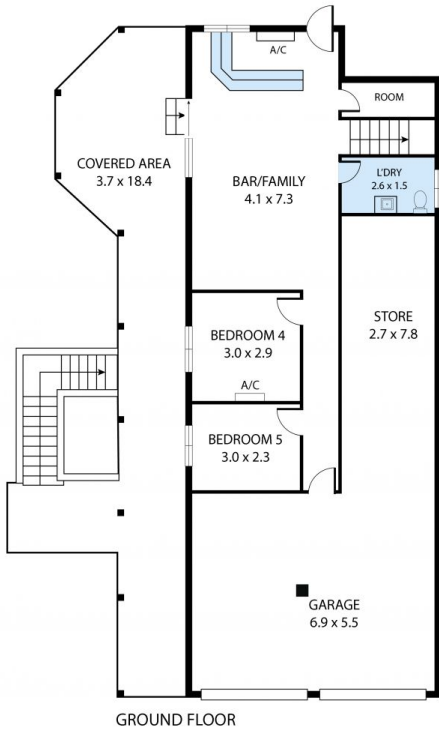
In brief:

Jenny Bishop
07 4772 2022
0400 893 087
jenny.bishop@tsvharcourts.com.au

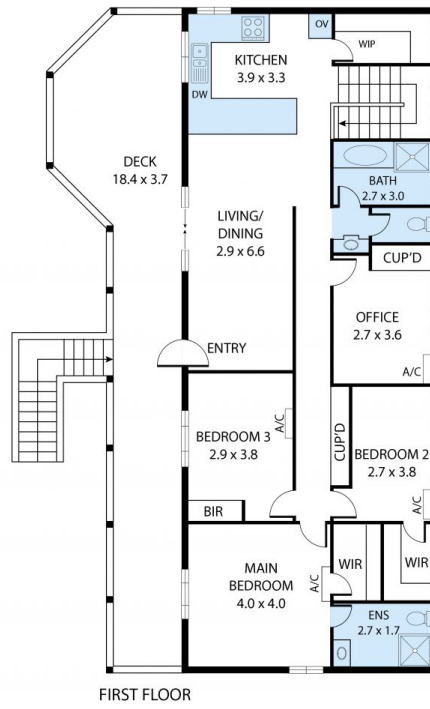
6 bedrooms (or 5 plus office), internal stairs, 2 living

<https://www.kingsberry.com.au>

210 Charters Towers Road Hermit Park QLD
07 47 722 022



GROUND FLOOR



FIRST FLOOR



23 Baxendell Place, Bushland Beach 4818

Whilst every attempt has been made to ensure the accuracy of the floor plan contained here, measurements of doors, windows, rooms and any other items are approximate and no responsibility is taken for any error, omission, or misstatement. This plan is for illustrative purposes only and should be used as such by any prospective purchaser.