



## 57 Ninth Avenue Railway Estate QLD

3 1 2

Situated in the popular suburb of Railway Estate and close to The Strand, CBD, Schools, Shops, this fully renovated cottage is cute as a button and all the heavy lifting has been done meaning your only job is to move the furniture straight in.

**Land Size** : 450 sqm

**View** : <https://www.kingsberry.com.au/sale/qld/townsville-district/railway-estate/residential/house/7288705>

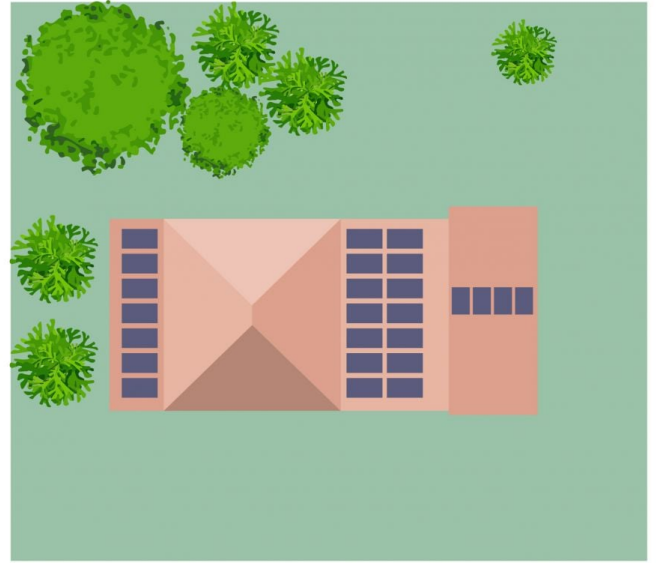
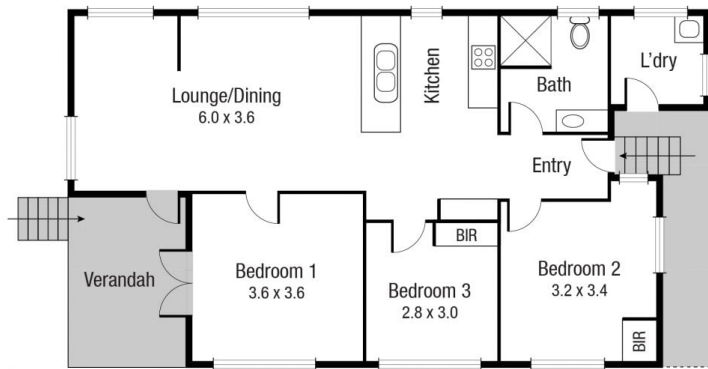
Features you'll love:

- Cute cottage positioned on a 450sqm fully fenced low maintenance block
- Three bedrooms with new split system cooling
- Bedrooms 2 & 3 have built in robes
- New chefs' kitchen with quality appliances and ample storage
- Light filled living and dining area serviced by two new split system aircons
- Stylish new bathroom with large walk-in shower tiled to ceiling along with vanity and toilet.
- Front timber porch
- 21 Solar panels on roof to keep them bills down
- Concrete slab for two vehicles with double gate
- Internal laundry
- New internal and external paint
- Central location close to all amenities



Adrian Raiteri  
07 4772 2022  
0427 673 612

[adrian.raiteri@tsvharcourts.com.au](mailto:adrian.raiteri@tsvharcourts.com.au)



Scale in metres. Indicative only. Dimensions are approximate. All information contained herein is gathered from sources we believe to be reliable. However we cannot guarantee its accuracy and interested persons should rely on their own enquiries.

## 57 NINTH