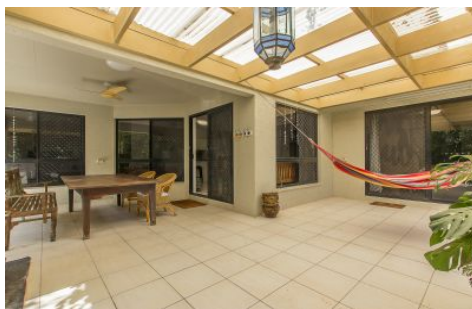


Harcourts Kingsberry



29 Daintree Drive Bushland Beach QLD

4 2 2

This large thirteen year old family home is in very good condition and sits on a large 839sqm block that backs onto an easement/wildlife corridor and has a park on one side meaning you will only ever have one neighbour. It gives the feeling of living on acreage without all the associated maintenance and cost.

- King sized master bedroom is carpeted and has a walk in robe & ensuite and is located at the back of the house in a quiet location perfect for shift workers
- Three more good sized carpeted bedrooms, all with built in robes are well away from the master bedroom
- Large tiled open plan living & dining area provides for two separate living spaces with dining in between
- Central kitchen with stacks of bench and storage space has electric appliances and views out to the pool so Mum can keep an eye on the kids swimming - fridge and

Price : \$ 540,000
Land Size : 839 sqm
View : <https://www.kingsberry.com.au/sale/qld/townsville-district/bushland-beach/residential/home/7178965>



Cameron Cole
07 4772 2022
0423 692 422
cameron.cole@tsvharcourts.com.au