



1/12 Kenilworth Avenue Hyde Park QLD

3 1 1

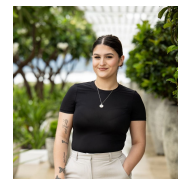
****TO BOOK AN INSPECTION or APPLY - SEE DETAILS BELOW****

View : <https://www.kingsberry.com.au/lease/qld/townsville-e-district/hyde-park/residential/unit/7145530>

This vibrant unit is located within minutes to Townsville CBD, Strand, Shopping Centres, Schools, and Public Transport. You have almost everything at your fingertips.

Property Features:

- Large modern open plan living and dining area featuring gas cooktop.
- 3 bedrooms with built-in wardrobes.
- Split system air conditioning to lounge room and 2 bedrooms
- Ceiling fans throughout.
- Capacious bright and airy bathroom featuring separate shower and bathtub.
- Large balcony perfect evening enjoying a refreshing beverage.
- Fenced complex with yard maintenance.
- Single car parking.
- Shared pool area.



Harcourts Leasing Team
 07 4772 2022
 0408 778 496
inspections2@tsvharcourts.com.au

Sarah Christiansen
 07 4772 2022
 0458 388 002
sarah@tsvharcourts.com.au