



22 Sweet Street Rosslea QLD

3 2 2

Here is a great opportunity to secure a quality home, in a fantastic central location. The newly renovated interior feels fresh and bright, enjoying loads of natural light. The air-conditioned open plan living area is spacious with vinyl planking flooring enhancing modern finish and easy-care living.

Tucked away kitchen offers plenty of bench and cupboard space overlooking the outdoor entertaining area.

The three bedrooms all feature built-ins and air-conditioning. The main bedroom is complete with large mirrored built-in robe and ensuite.

Entertaining can be enjoyed on the private patio area - perfect for all year round entertaining.

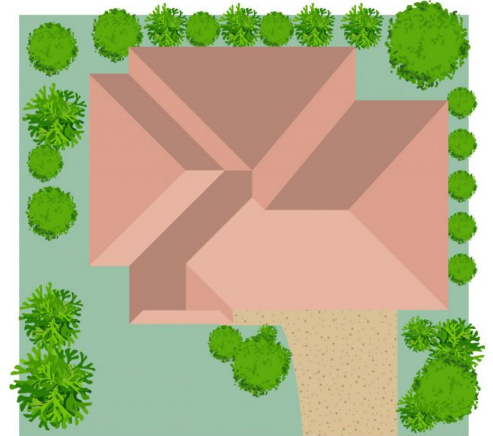
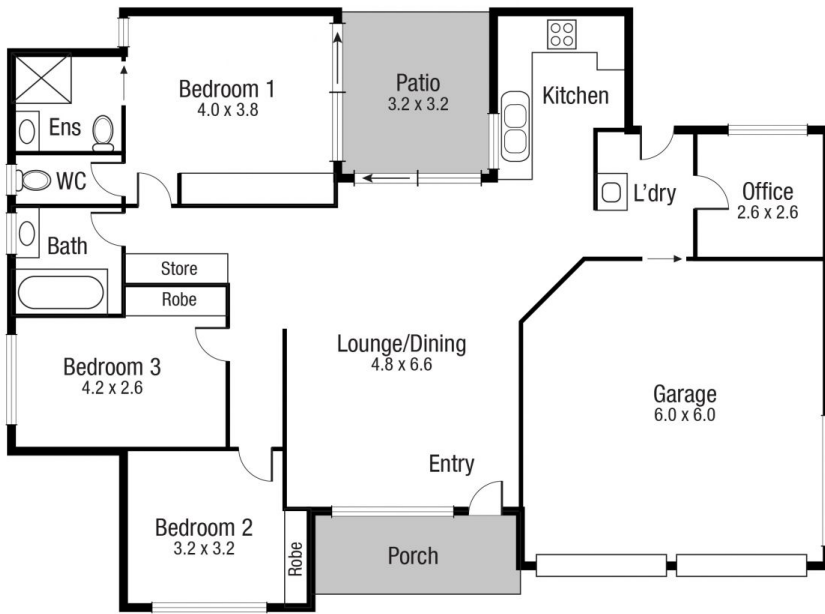
Very neat and tidy and perfect for entry level for first home buyers, investors or retiree's.

- Low maintenance living
- 3 bedrooms/ 2 bathrooms/ study/ double garage
- Tucked away kitchen providing plenty of bench and cupboard space
- Open plan living and dining with split air-conditioning
- Fresh interiors with vinyl planking throughout
- 3 bedrooms - master complete with built in robe and

Price : \$ 390,000
Land Size : 454 sqm
View : <https://www.kingsberry.com.au/sale/qld/townsville-district/rosslea/residential/house/7128916>



Tammy Tyrrell
 07 4772 2022
 0412 534 704
tammy.tyrrell@tsvharcourts.com.au



Scale in metres. Indicative only. Dimensions are approximate. All information contained herein is gathered from sources we believe to be reliable. However we cannot guarantee its accuracy and interested persons should rely on their own enquiries.

TOTAL AREA : 165.7 sq.m

22 Sweet St, Rosslea