

# Harcourts Kingsberry



## 26 Gilmour Crescent Kirwan QLD

3 2 2

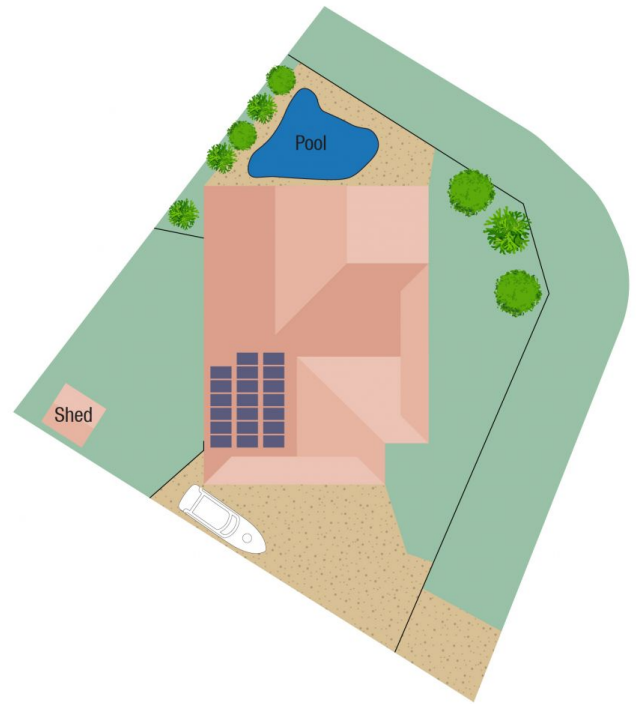
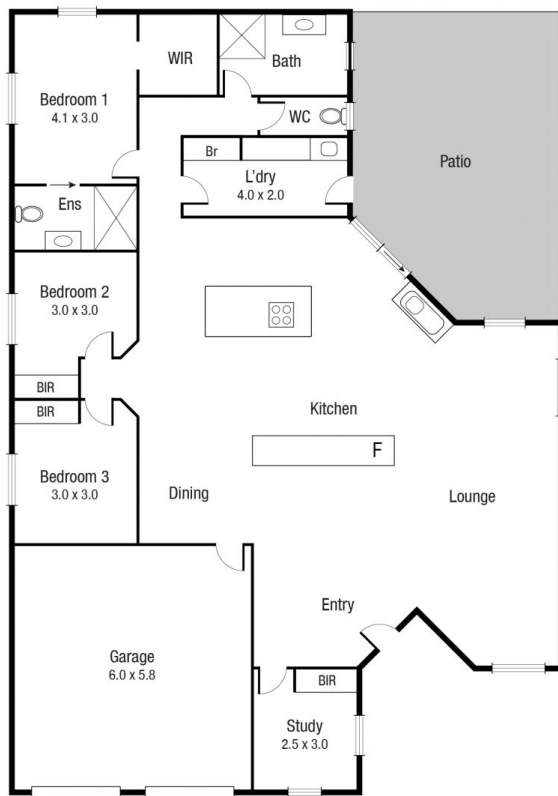
Tucked away in a quiet pocket of Kirwan, lies this absolute gem of a property located at 26 Gilmour Crescent, Kirwan. The current owners have invested in some tasteful additions and renovations to the property and now all that's left to do is to move the furniture straight in and start enjoying everything on offer.

The house is perfectly positioned on a large 767sqm corner block with separate yards on each side of the residence. Upon entering the home, space springs to mind as you are met with a large open plan living and dining area with more than enough room for the family to sprawl out. The kitchen is a showstopper and features a large central island bench forming the heart of the home, soft close cabinetry, and new black appliances. There are three spacious bedrooms with built-in robes and air-conditioning whilst the master bedroom features a walk-in robe and ensuite. The laundry

**Land Size** : 767 sqm  
**View** : <https://www.kingsberry.com.au/sale/qld/townsville-district/kirwan/residential/house/7074177>



Adrian Raiteri  
07 4772 2022  
0427 673 612  
[adrian.raiteri@tsvharcourts.com.au](mailto:adrian.raiteri@tsvharcourts.com.au)



Scale in metres. Indicative only. Dimensions are approximate. All information contained herein is gathered from sources we believe to be reliable. However we cannot guarantee its accuracy and interested persons should rely on their own enquiries.

TOTAL AREA : 244.4 sq.m

26 Gilmour Cr, Kirwan