

Harcourts Kingsberry



28 Capricorn Drive Burdell QLD

3 **1** **1**

****TO BOOK AN INSPECTION or APPLY - SEE DETAILS BELOW****

This cosy modern cottage is ready to call home! Offering a rear patio with an open view of the spacious yet easy to maintain yard. It's the perfect area for spending quality time outside or entertaining the family.

Situated in a family friendly suburb of Burdell, this home is only a short distance to Northshore Shopping centre, Schools, Public Transport, The Strand Fitness and much more!

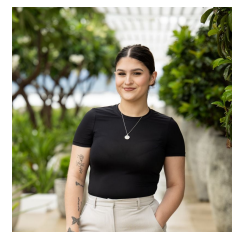
Property features:

? Modern kitchen with electric cooking and ample bench and cabinetry space.

Land Size : 490 sqm
View : <https://www.kingsberry.com.au/lease/qld/townsville-district/burdell/residential/house/7050478>



Harcourts Leasing Team
07 4772 2022



Sarah Christiansen
07 4772 2022

<https://www.kingsberry.com.au>

210 Charters Towers Road Hermit Park QLD
07 47 722 022