

Harcourts Kingsberry



57 Pixley Crescent Heatley QLD

3  1  2 

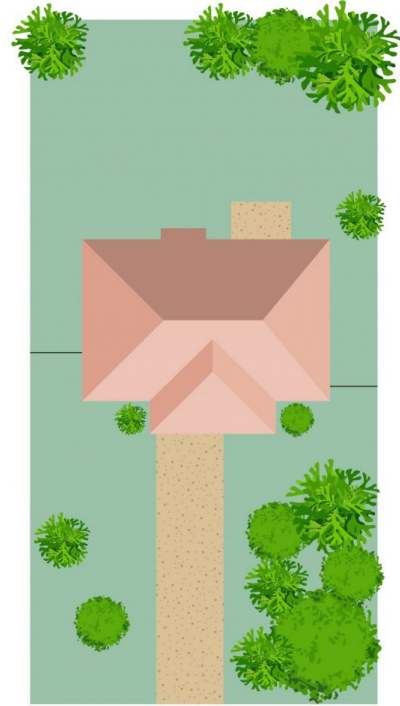
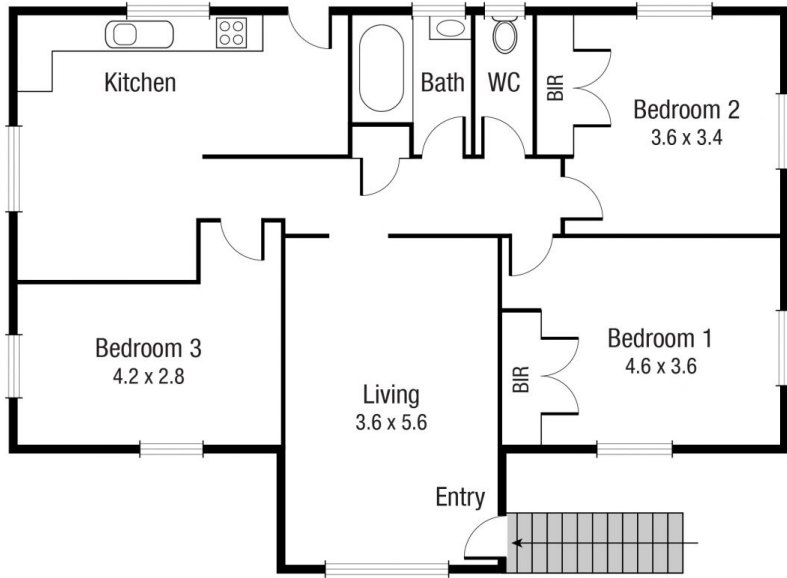
Conveniently located minutes to schools and shops and positioned on a generous 642sqm fully fenced block, this highset home located at 57 Pixley Crescent, Heatley is the perfect opportunity for a savvy first home buyer wanting to dip their toe into the Townsville property market or an investor looking for strong rental returns and future growth opportunities.

The residence boasts a very practical floorplan with a large central living area with split system air-conditioning, spacious kitchen in good condition, three well-appointed bedrooms with air-conditioning and timber floorboards throughout. Bedrooms 1 & 2 also feature built in robes. The bathroom features a shower/tub combo, vanity, and shaving cupboard along with a separate toilet. Downstairs is fully enclosed and lockable to securely store your vehicles and toys.

Price : \$ 265,000
Land Size : 642 sqm
View : <https://www.kingsberry.com.au/sale/qld/townsville-district/heatley/residential/house/7049393>



Adrian Raiteri
07 4772 2022
0427 673 612
adrian.raiteri@tsvharcourts.com.au



Scale in metres. Indicative only. Dimensions are approximate. All information contained herein is gathered from sources we believe to be reliable. However we cannot guarantee its accuracy and interested persons should rely on their own enquiries.

57 Pixley Cr, Heatley