

# Harcourts Kingsberry



## 79 Tasman Circuit Burdell QLD

4  2  2 

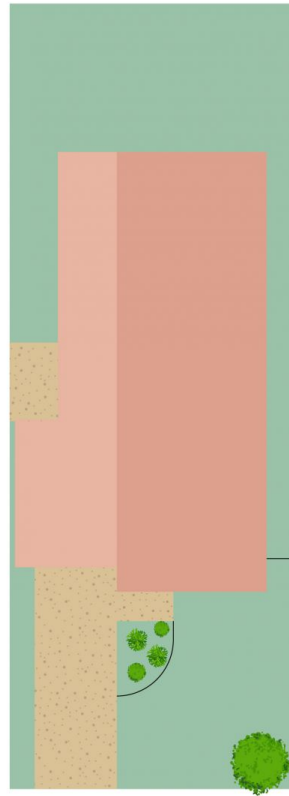
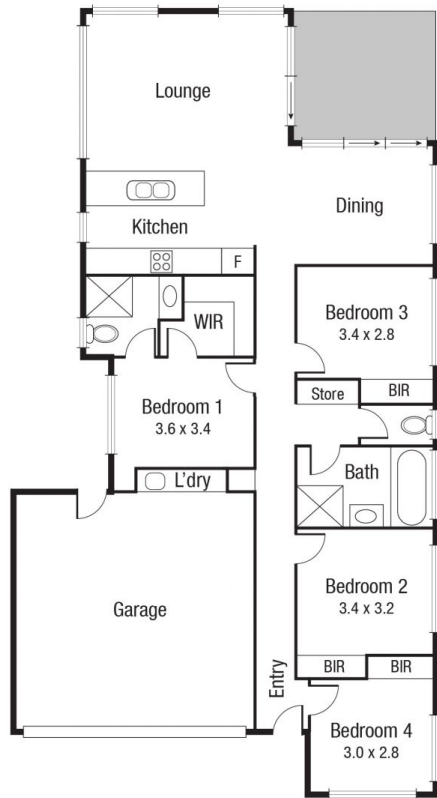
Tucked away in a quiet and popular pocket of Burdell, this immaculately presented property located at 79 Tasman Circuit, Burdell is a great investment opportunity in an extremely tight rental market or an impeccable family home where you can shift the furniture straight in and start living.

The house is situated on a fully fenced low maintenance 417sqm fully fenced block of land with no rear neighbours. The modern façade adds class whilst the floorplan adds functionality. The modern home has been extremely well maintained and features four bedrooms complete with quality built in robes and Fujitsu split system air-conditioning, two bathrooms, double car accommodation, and a central kitchen overlooking the open plan living and dining area and covered alfresco area.

**Price** : \$ 425,000  
**Land Size** : 417 sqm  
**View** : <https://www.kingsberry.com.au/sale/qld/townsville-district/burdell/residential/house/6997234>



Adrian Raiteri  
07 4772 2022  
0427 673 612  
[adrian.raiteri@tsvharcourts.com.au](mailto:adrian.raiteri@tsvharcourts.com.au)



Scale in metres. Indicative only. Dimensions are approximate. All information contained herein is gathered from sources we believe to be reliable. However we cannot guarantee its accuracy and interested persons should rely on their own enquiries.

TOTAL AREA : 171.6 sq.m

79 Tasman Cct, Burdell