

Harcourts Kingsberry



5 Payne Street Mount Louisa QLD

3 1 2

A step in the right direction, this three-bedroom home is the epitome of perfect investment or an ideal first step into the property market. Boasting a plethora of space, family living never seemed so comfortable!

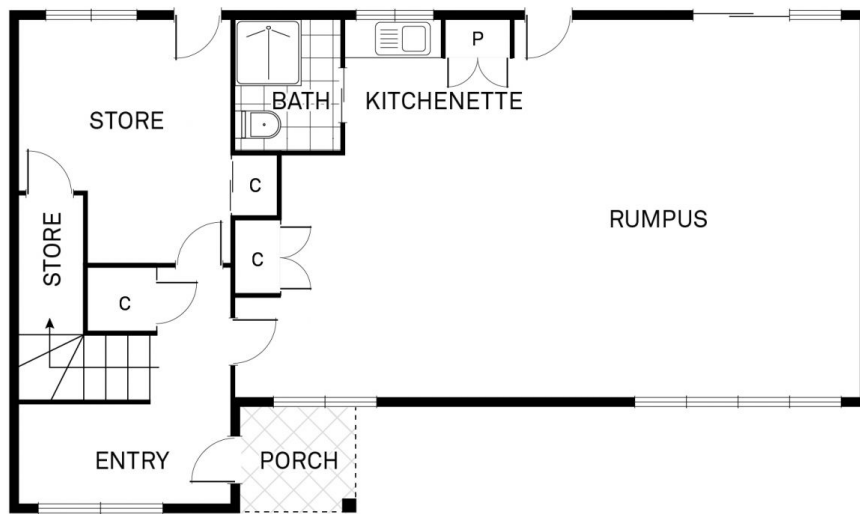
Upstairs you will find an open and airy lounge room that offers plenty of room for a large sofa set, cabinets, and the biggest media setup that you could possibly desire. The kitchen has been designed for the home cook who loves to whip up a storm. With plenty of bench space, ample storage, modern appliances, and a dishwasher, you will never order take-out again! Adjacent to the kitchen you will find the spacious dining space that flows directly onto the deck/verandah. This deck was built for entertaining, with the convenience of having direct views of the pool, you can enjoy a glass of wine with friends whilst watching the kids have a swim!

Price : \$ 308,000
Land Size : 607 sqm
View : <https://www.kingsberry.com.au/sale/qld/townsville-district/mount-louisa/residential/house/6992590>

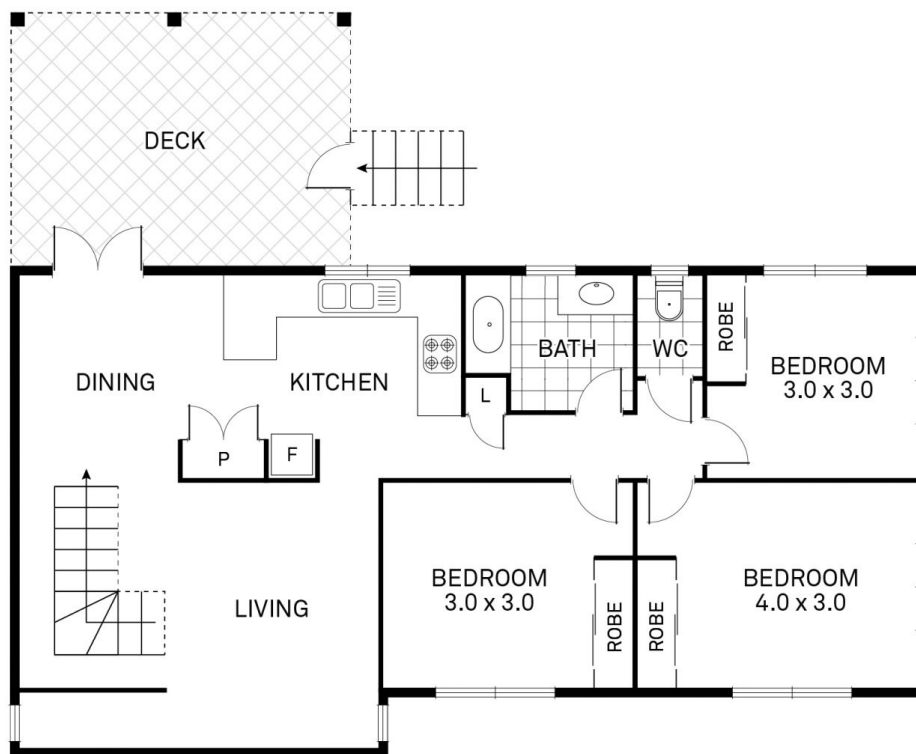


Jayden Evans
07 4772 2022
0477 543 617
jayden.evans@tsvharcourts.com.au

5 Payne Street, Mount Louisa



LOWER LEVEL



UPPER LEVEL



| AREA (M ²) | |
|------------------------|---------|
| HOUSE UPPER | - 83.2 |
| HOUSE LOWER | - 70.5 |
| DECK/PORCH | - 19.6 |
| TOTAL | - 173.3 |