

Harcourts Kingsberry



2 Palamino Place Kelso QLD

4 3 5

Wanting some horses? A few head of cattle? Maybe even a Horticulture Nursey in the MASSIVE greenhouse to the rear of the 2.85 Hectare block! The skies are the limit with this stunning 'Country Estate' style home and when you see this in person, you will want to make this your home!

Price : \$ 655,000
Land Size : 2.85 ha
View : <https://www.kingsberry.com.au/sale/qld/townsville-district/kelso/residential/house/6965073>

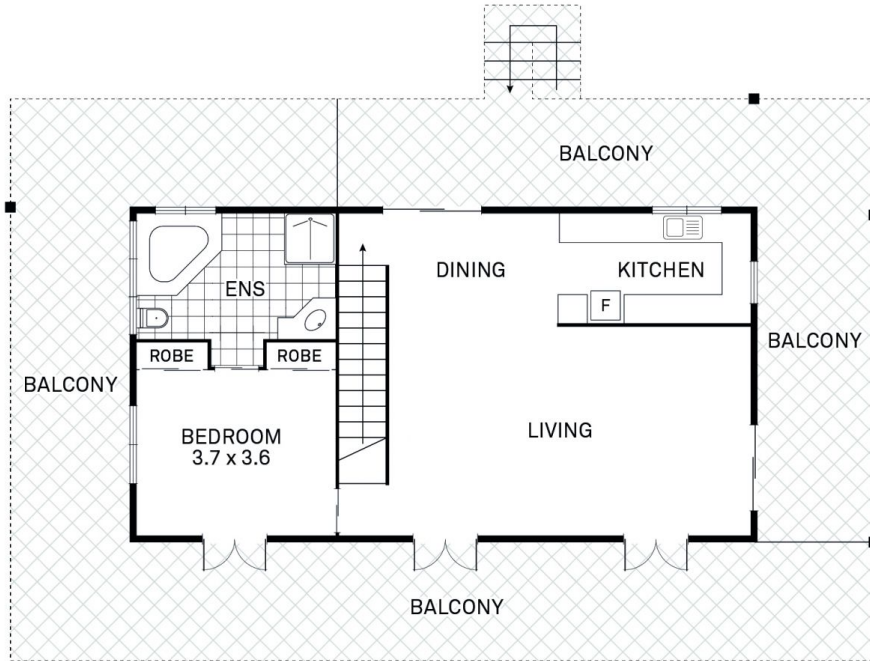
Main Dwelling;

- Three spacious bedrooms, all fitted with air- conditioning and ceiling fans. One of which can be separated with a concertina door to create two separate rooms.
- Master bedroom is fitted with split system airconditioning, ceiling fan, and built-in wardrobes. It also comes with its private ensuite which is fitted with a deluxe spa bath, shower, single vanity, and toilet.
- Large open plan living and dining upstairs and open living space on the ground floor, allowing the family to spread out

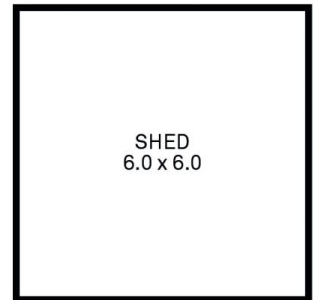
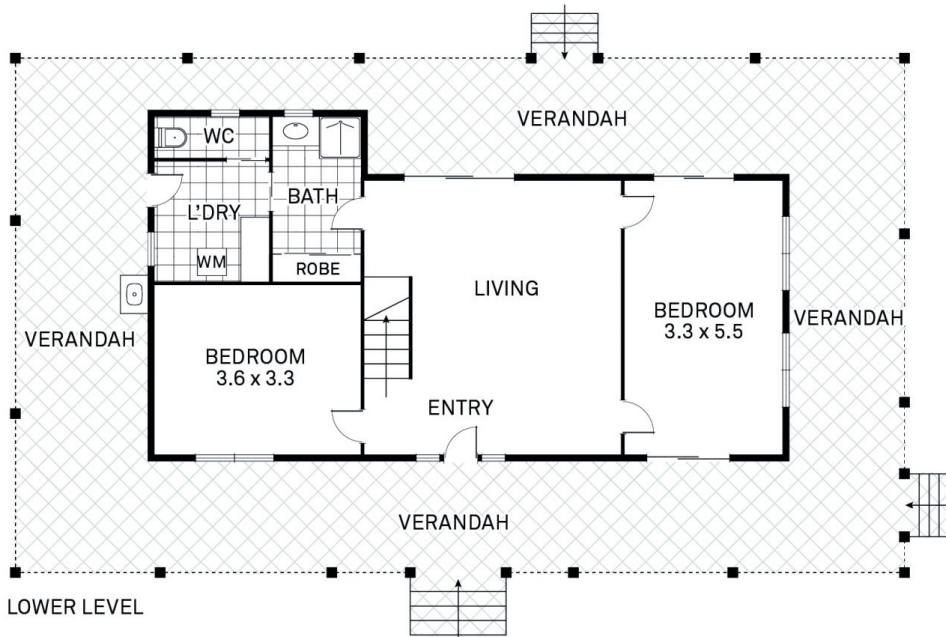


Jayden Evans
07 4772 2022
0477 543 617
jayden.evans@tsvharcourts.com.au

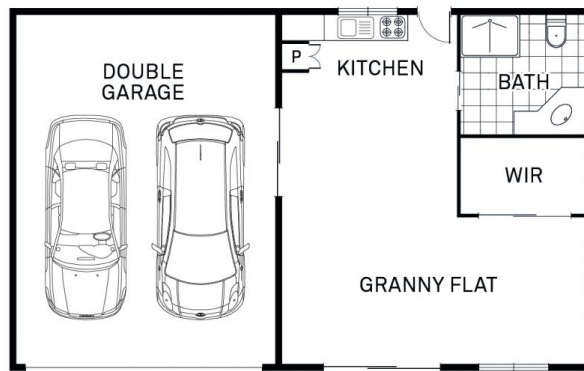
2 Palamino Place, Kelso



UPPER LEVEL



LOWER LEVEL



(NOT IN POSITION)

AREA (M ²)	
HOUSE(UPPER)	- 103.3
HOUSE(LOWER)	- 87.4
VERANDAH	- 118.5
BALCONY	- 126.8
GRANNY FLAT	- 48.7
GARAGE	- 41.2
TOTAL	- 525.9