

# Harcourts Kingsberry



## 39 Nix Street West End QLD

3 2 2

This double-storey, air-conditioned home on 810sqm has just been renovated. It has been freshly painted and has polished timber floors upstairs, and a floating timber floor downstairs. The new kitchen, bathroom, and laundry are looking forward to their first use. The revitalized deck overlooks the backyard with its inground pool, garden sheds, and greenhouse. The property is well fenced and there is double gate access to the landscaped yard.

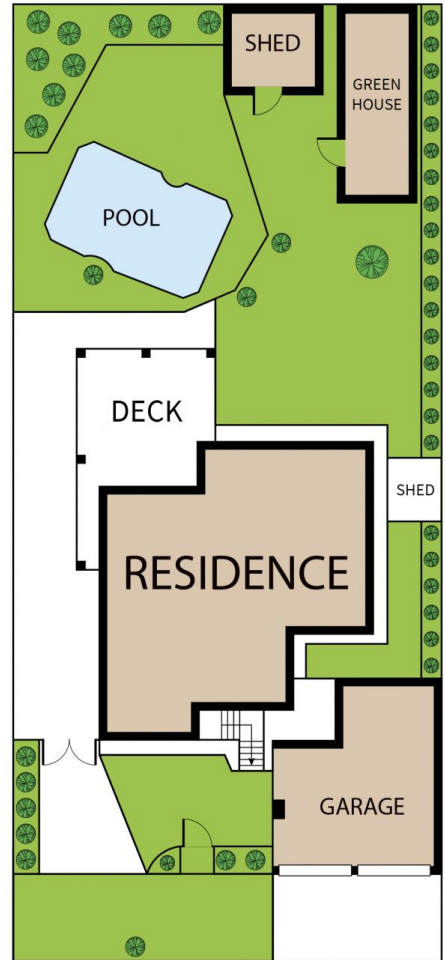
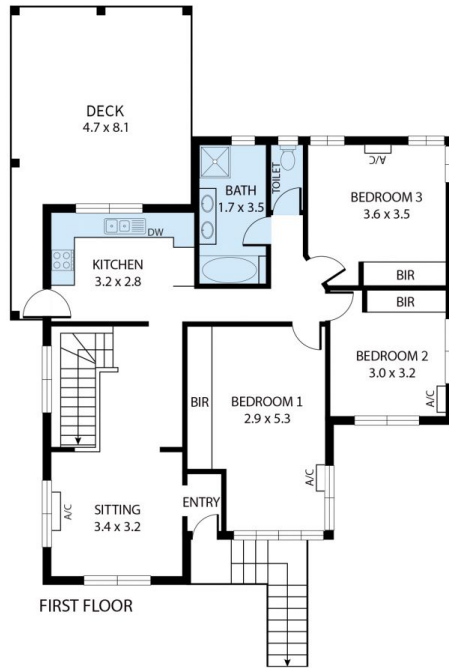
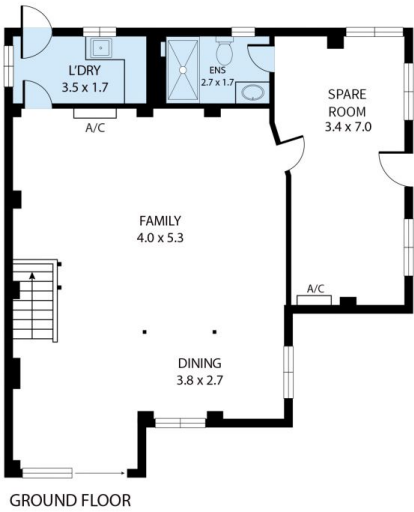
Centrally located close to transport links, schools, shopping centres, The Strand, and the CBD it has been designed and sited to maximize the effect of the prevailing sea breeze.

- 3 bedrooms upstairs
- Large room with ensuite downstairs
- Multiple living areas upstairs and down
- Double garage with adjoining storage

**Price** : \$ 449,000  
**Land Size** : 810 sqm  
**View** : <https://www.kingsberry.com.au/sale/qld/townsville-district/west-end/residential/house/6925650>



Malcolm Thomson  
07 4772 2022  
0400 545 664  
[malcolm.thomson@tsvharcourts.com.au](mailto:malcolm.thomson@tsvharcourts.com.au)



### 39 Nix Street, West End 4810

Whilst every attempt has been made to ensure the accuracy of the floor plan contained here, measurements of doors, windows, rooms and any other items are approximate and no responsibility is taken for any error, omission, or misstatement. This plan is for illustrative purposes only and should be used as such by any prospective purchaser.