



91 Tenth Avenue Railway Estate QLD

2 1 2

Oozing with character and charm and positioned on a 760sqm block in the highly sought-after suburb of Railway Estate, this classic Queenslander is yearning for a new owner who will love and enjoy it for years to come.

Step inside and be greeted with striking polished timber floors and ample louvres allowing great ventilation through the home. The open plan living and dining features a new split system air-conditioning and flows into the kitchen which comes complete with a large island bench and gas cooktop.

Downstairs offers a magnitude of uses and features a large multi-purpose room with new stylish vinyl planking installed. There is also a covered entertaining area and lockable car accommodation.

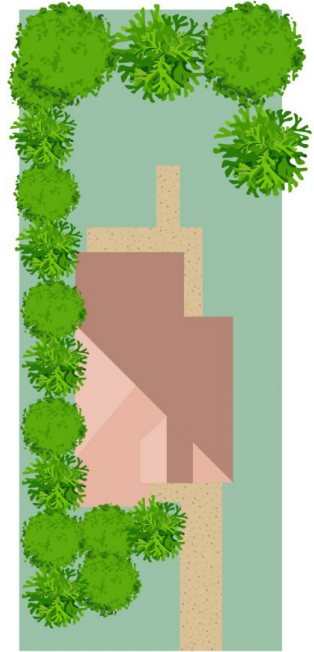
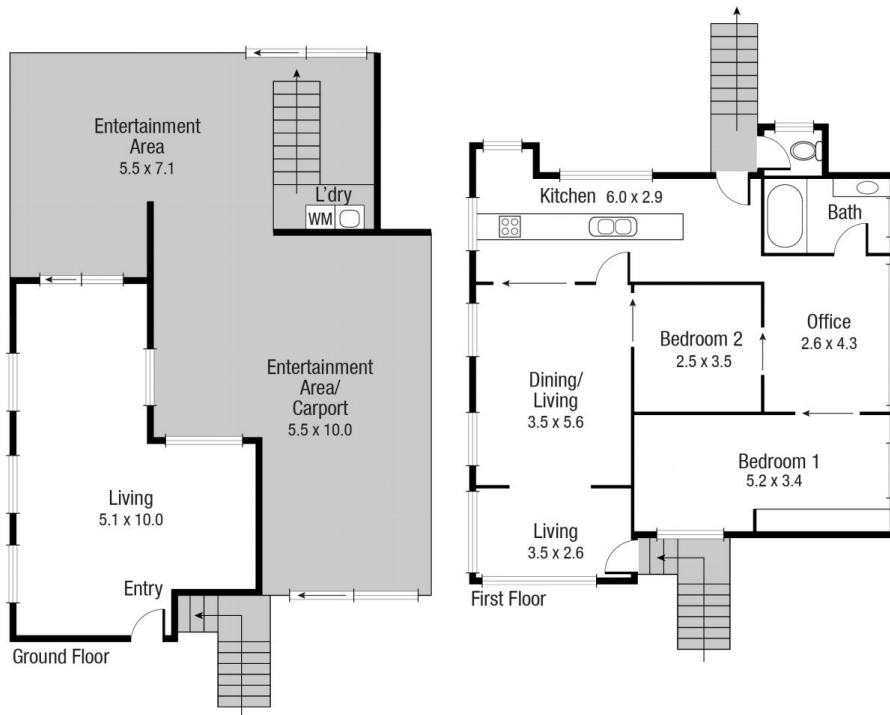
Property Offers:

- Large open plan living and dining space featuring louvres, casement windows and new split system air-conditioning
- Kitchen is in the heart of the home and features a gas cooktop, large island bench and bi-fold windows to allow breezes to pass through the residence.

Price : \$ 345,000
Land Size : 760 sqm
View : <https://www.kingsberry.com.au/sale/qld/townsville-district/railway-estate/residential/house/6850793>



Adrian Raiteri
 07 4772 2022
 0427 673 612
adrian.raiteri@tsvharcourts.com.au



Scale in metres. Indicative only. Dimensions are approximate. All information contained herein is gathered from sources we believe to be reliable. However we cannot guarantee its accuracy and interested persons should rely on their own enquiries.

TOTAL AREA : 221.4 sq.m

91 Tenth Av, Railway Estate