



38 Elford Place Mount Louisa QLD

4 2 2

Tucked away in a quiet and popular pocket of Mount Louisa, this immaculately presented property located at 38 Elford Place is true turnkey living with nothing more to do than move the furniture straight in and start living your best life.

The house was built 6 years ago and sits proudly on a well-maintained 701 sqm block. The modern home features four bedrooms complete with quality built in robes and split system air-conditioning, two bathrooms, double car accommodation, open plan living and dining area with a spacious kitchen located in the heart of the home.

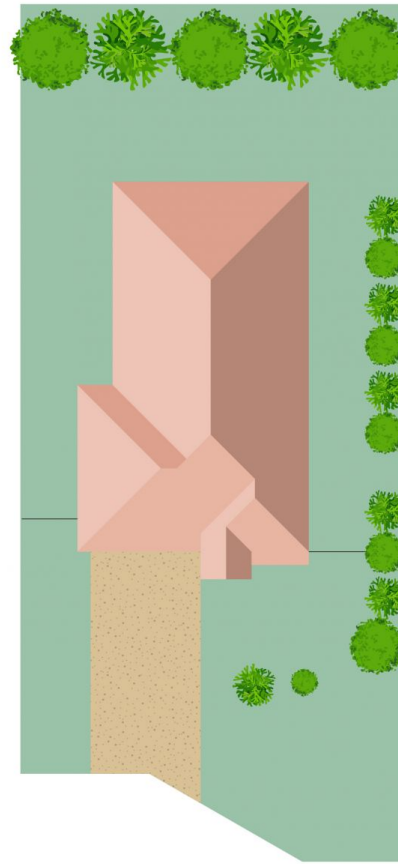
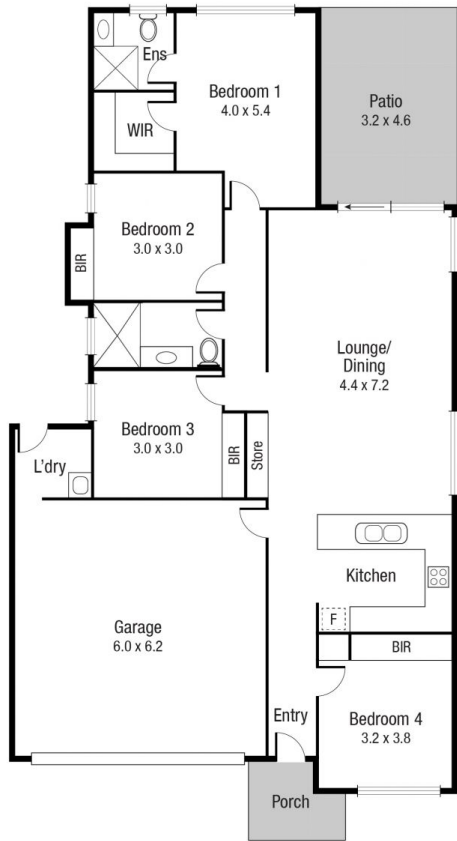
Property offers but is not limited to:

- Large light filled open plan living/dining area
- Four spacious bedrooms complete with built-in robes and Fujitsu Split System Airconditioning
- Spacious Kitchen featuring large breakfast bar, gas cooktop, ample cupboard and bench space
- Master bedrooms features walk in robe and ensuite
- Covered Alfresco Area
- Double Car accommodation
- 701sqm fully fenced block

Price : \$ 417,500
Land Size : 701 sqm
View : <https://www.kingsberry.com.au/sale/qld/townsville-district/mount-louisa/residential/house/6752658>



Adrian Raiteri
07 4772 2022
0427 673 612
adrian.raiteri@tsvharcourts.com.au



Scale in metres. Indicative only. Dimensions are approximate. All information contained herein is gathered from sources we believe to be reliable. However we cannot guarantee its accuracy and interested persons should rely on their own enquiries.

TOTAL AREA : 171.1 sq.m

38 Elford Place, Mount Louisa