



2 Fifth Street RAILWAY ESTATE QLD

4 🏠 2 🚗 5 🚗

This fully renovated property is a rare gem with plenty to offer - meticulous renovation, big shed and huge block with amazing access!

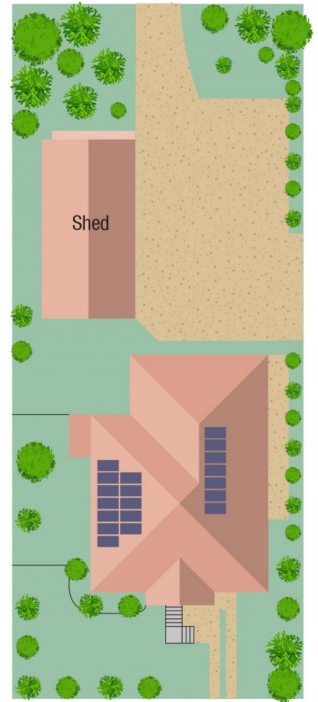
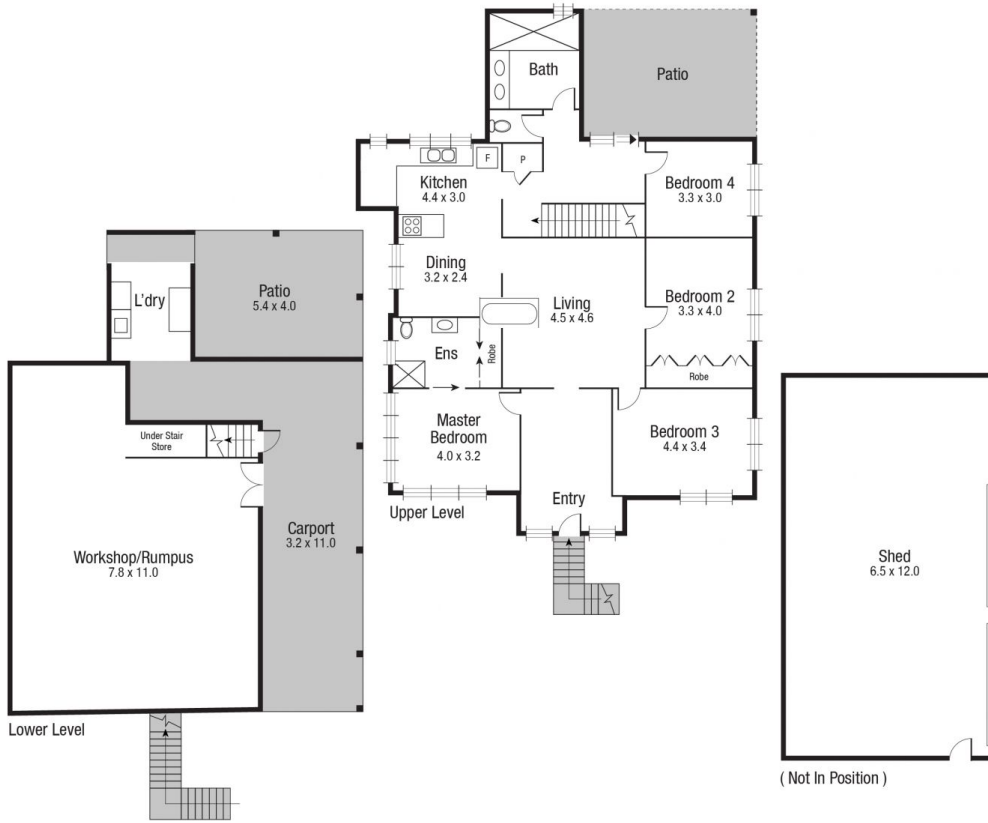
This beautifully renovated character home boasts a very practical layout, split system airconditioning and a great sense of light and space. The kitchen, living and dining rooms flow seamlessly for ease of living. Each of the four bedrooms are generously sized with the master enjoying the convenience of a stunning ensuite. The remaining bedrooms are serviced by the modern main bathroom. The updated kitchen perfectly incorporates the original character of the home while providing plenty of bench and storage space and quality appliances. The rear deck is where you will want to spend most of your time enjoying the year round breezes and entertaining friends and family. Downstairs is a great, secure and versatile space where you will find the laundry, car accommodation, and a large rumpus/workshop room.

This huge, 1012m2 fully fenced block has triple access; one from Fifth Street, one from a side laneway and the other from the rear laneway. The insulated, massive shed

Building Size : 280 sqm
Land Size : 1012 sqm
View : <https://www.kingsberry.com.au/sale/qld/townsville-district/railway-estate/residential/house/6287156>



Ben Kingsberry
 07 4772 2022
 0438 792 652
ben.kingsberry@tsvharcourts.com.au



Scale in metres. Indicative only. Dimensions are approximate. All information contained herein is gathered from sources we believe to be reliable. However we cannot guarantee its accuracy and interested persons should rely on their own enquiries.

TOTAL AREA : 279.8 sq.m

2 Fifth St, Railway Estate