



31 Clayton Street HERMIT PARK QLD

6 3 2

Warm and welcoming with stunning street appeal this is sure to impress. Thoughtfully designed with every detail of easy modern living in mind, this abode is truly special and will provide your family with many memorable moments.

Upon arrival you are instantly captivated by its exquisite presence and are sure to fall in love at the front gate.

Proudly refurbished by local award-winning builders Townsend Constructions, this home has undergone a brilliant transformation with quality renovations and modern touches.

The luxurious and spacious open plan features separate living and dining areas, opening onto the vast alfresco area. The delicious kitchen offers loads of cupboard space and a relaxing breakfast bar showcasing stone bench tops, SMEG appliances, premium cabinetry with soft close and space for the wine fridge.

The lower level also delivers a guestroom retreat with a two-way bathroom and laundry, while the other 5 bedrooms accommodate the upper level of the residence with various home office options. The main bedroom benefits from an ensuite, floor to ceiling tiles, twin stone bench top vanities and double shower heads.

The classy main bathroom is centrally positioned featuring

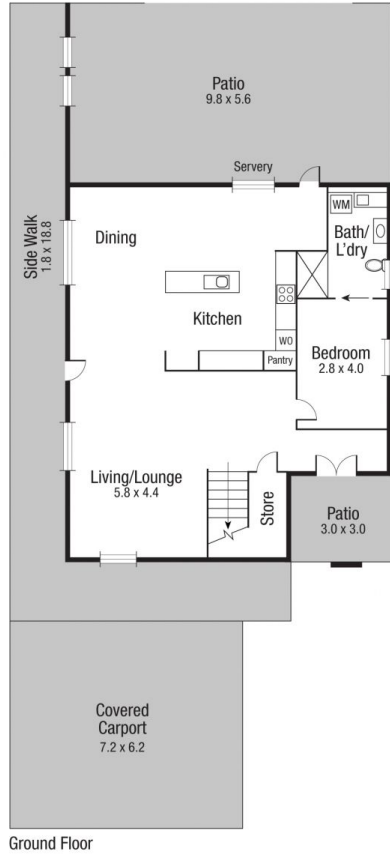
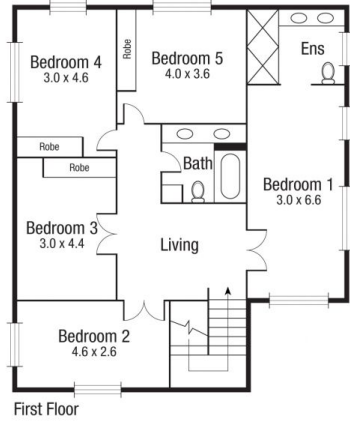
Land Size : 809 sqm

View : <https://www.kingsberry.com.au/sale/qld/townsville-district/hermit-park/residential/house/5891984>



Tammy Tyrrell
07 4772 2022
0412 534 704

tammy.tyrrell@tsvharcourts.com.au



Scale in metres. Indicative only. Dimensions are approximate. All information contained herein is gathered from sources we believe to be reliable. However we cannot guarantee its accuracy and interested persons should rely on their own enquiries.

TOTAL AREA : 319.7 sq.m

31 Clayton