



9 Gollogly Lane CONDON QLD

3 1 2

Just starting out, or starting to slow down. Whatever your requirements, this property located at 9 Gollogly Lane, Condon represents incredible value in a convenient location.

Entertaining outside all year round will be a breeze with your oversized patio overlooking your large pebblecrete pool.

This property offers but is still not limited to:

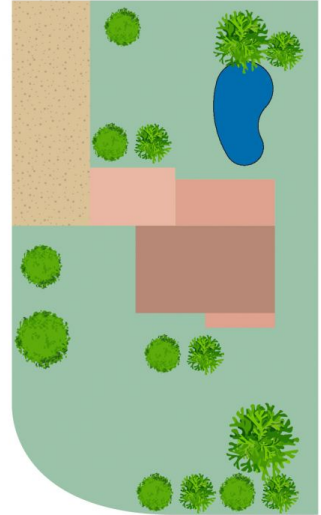
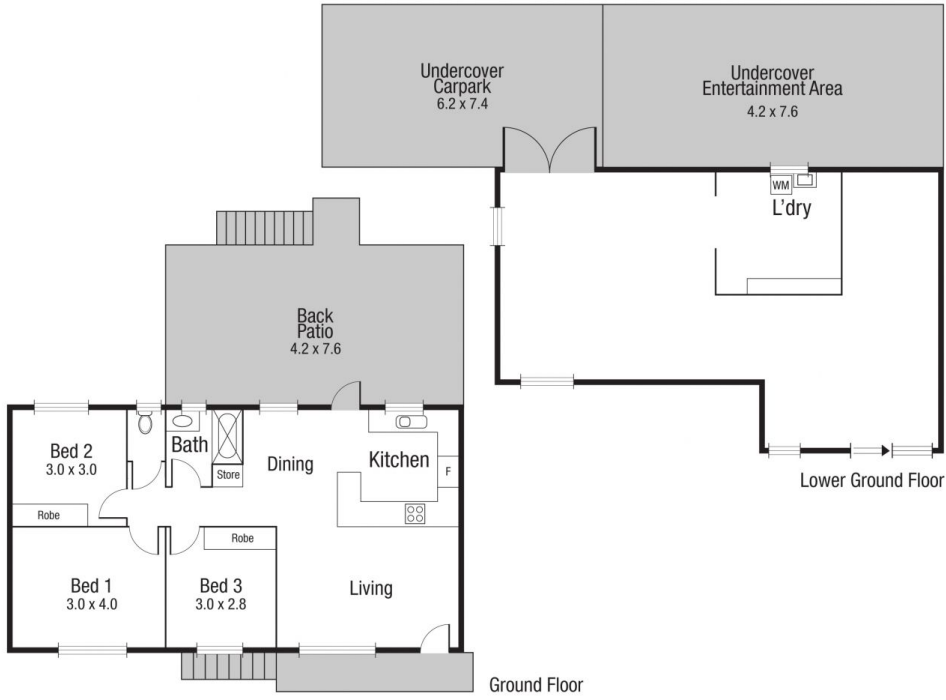
- Three air conditioned bedrooms with built in robes and ceiling fans.
- Massive timber deck overlooking large in ground pool
- Formal Living room
- 799 sqm fully fenced corner block
- Undercover double carport accessible via Pinnacle Drive
- Fresh Internal paint throughout
- Downstairs is fully enclosed and lockable.
- Access to Bore Water

Property is easily accessible via Riverway Drive and is only minutes to Schools, Willows Shopping Centre, Cannon Park and has easy access to the Ring Road linking you to

Price : \$ 250,000
Land Size : 799 sqm
View : <https://www.kingsberry.com.au/sale/qld/townsville-district/condon/residential/house/5753025>



Adrian Raiteri
07 4772 2022
0427 673 612
adrian.raiteri@tsvharcourts.com.au



Scale in metres. Indicative only. Dimensions are approximate. All information contained herein is gathered from sources we believe to be reliable. However we cannot guarantee its accuracy and interested persons should rely on their own enquiries.

TOTAL AREA : 214.8 sq.m

9 Gollogoly Lane, Condon