

Harcourts Kingsberry



56 Poinsettia Drive BOHLE PLAINS QLD

4 2 2

This property located at 56 Poinsettia Drive, Bohle Plains is ticking all the boxes for discerning buyers looking for the perfect family home with so much to offer in a great location.

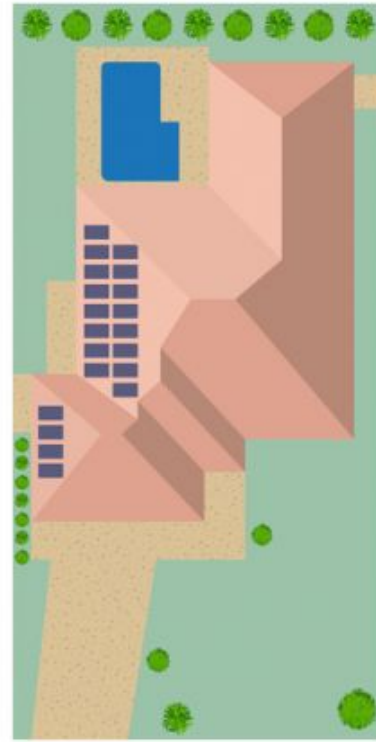
The Property:

- 236sqm under roof Ritzo homes built residence with three living spaces including a separate kids dens and theatre room
- Stunning and spacious kitchen with stone bench tops, stainless steel tapwear, gas appliances and self closing pot drawers
- Massive walk in pantry going into the laundry with ample linen storage
- Master bedroom has a stunning floor to ceiling tiled en suite with a bespoke walk in wardrobe.
- Second bathroom features floor to ceiling tiles and a

Price : \$ 471,000
Building Size : 226 sqm
View : <https://www.kingsberry.com.au/sale/qld/townsville-district/bohle-plains/residential/house/5538566>



Adrian Raiteri
07 4772 2022
0427 673 612
adrian.raiteri@tsvharcourts.com.au



Scale in metres. Indicative only. Dimensions are approximate. All information contained herein is gathered from sources we believe to be reliable. However we cannot guarantee its accuracy and interested persons should rely on their own enquiries.

56 Poinsettia Drive, Bohle Plains