



6 Edinburgh Court CASTLE HILL QLD

3 2 4

This north facing mouth-watering offering encompasses awe-inspiring views of Ocean, Island and Port while adjoining bushland reserve. Configured to maximize light and space, the design is timeless with robust materials designed to withstand generations of family living and true to its Sydney Architect it is an expression of spatial fluidity and flexibility.

The practical double level configuration accommodates all family situations ensuring your tenure is endless. There is so much on offer; three living areas, internal stairs, study, fabulous saltwater pool and a generous 809sqm block. Impeccable maintenance throughout the years has ensured that this beautiful home is original and continues to celebrate its unique position.

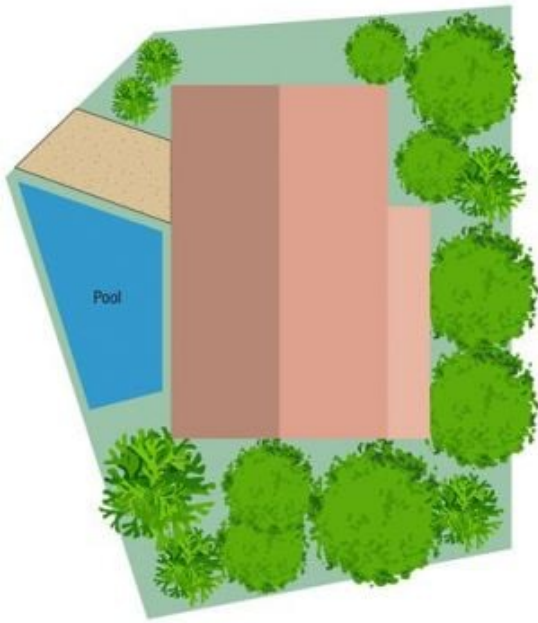
Features:

- Magnificent views of Ocean, Island and Port from almost every angle
- Three separate living areas, three bedrooms, plus study
- Original kitchen with stainless steel appliances and ample storage
- Large deck opens from the main living and dining areas

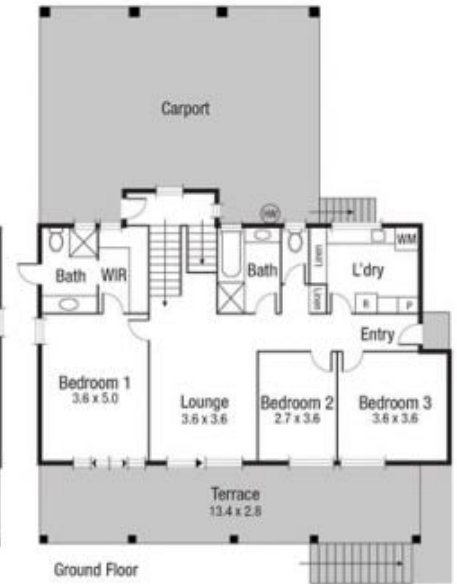
Price : \$ 1,120,000
Land Size : 809 sqm
View : <https://www.kingsberry.com.au/sale/qld/townsville-district/castle-hill/residential/house/4326621>



Ben Kingsberry
 07 4772 2022
 0438 792 652
ben.kingsberry@tsvharcourts.com.au



First Floor



Ground Floor



Scale in metres. Indicative only. Dimensions are approximate. All information contained herein is gathered from sources we believe to be reliable. However we cannot guarantee its accuracy and interested persons should rely on their own enquiries.

AREA	
INT	: 207.05 sq.m
EXT	: 71.02 sq.m
TOTAL	: 278.07 sq.m

6 Edinburgh