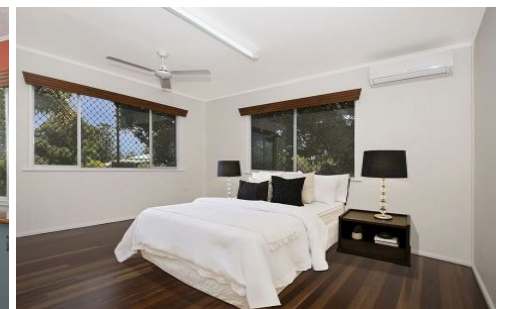
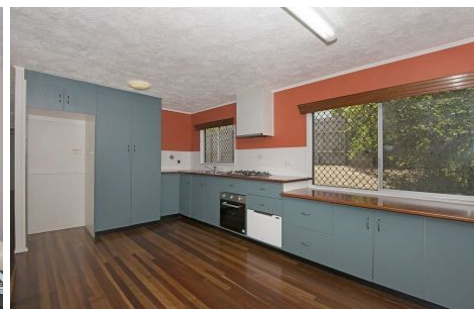


Harcourts Kingsberry



28 Church Street WEST END QLD

3  2 

Magnificently rebuilt this faultless home takes entertaining to a new level. Surrounded by hill and city views this impressive home displays a wonderful lifestyle, tucked away at the end of a quiet no through road.

Price : \$ 372,000
Land Size : 708 sqm
View : <https://www.kingsberry.com.au/sale/qld/townsville-district/west-end/residential/house/4326089>

Offering a versatile floor plan this home provides:

- 3 generous sized bedrooms
- 2 bathrooms, main complete with spa and floor to ceiling tiles
- Open plan air-conditioning living with fluent flow and views to the timber deck
- Modern kitchen includes recycle oak bench tops, new oven and dishwasher
- Quality fixtures and fittings throughout
- Polished timber floor throughout
- 708m2 corner fully fenced block



Ben Kingsberry
07 4772 2022
0438 792 652
ben.kingsberry@tsvharcourts.com.au