

Harcourts Kingsberry



7A Glamis Court CASTLE HILL QLD

5 🛏 4 🚗 2 🚘

Reverence for the setting is a primary tenet of this spectacular home; to prioritise nature over built form.

Designed as a modernist pavilion style over three levels it expresses an inherent respect for nature. Water elements blend with timber breezeways, verandahs and glass louvres to bring the outdoors in. Panoramic ocean vistas and sea breezes combine with luxury; this residence stands alone with attention to detail, abundance of quality fixtures and fittings and the highest of standards to embrace tropical living at its best.

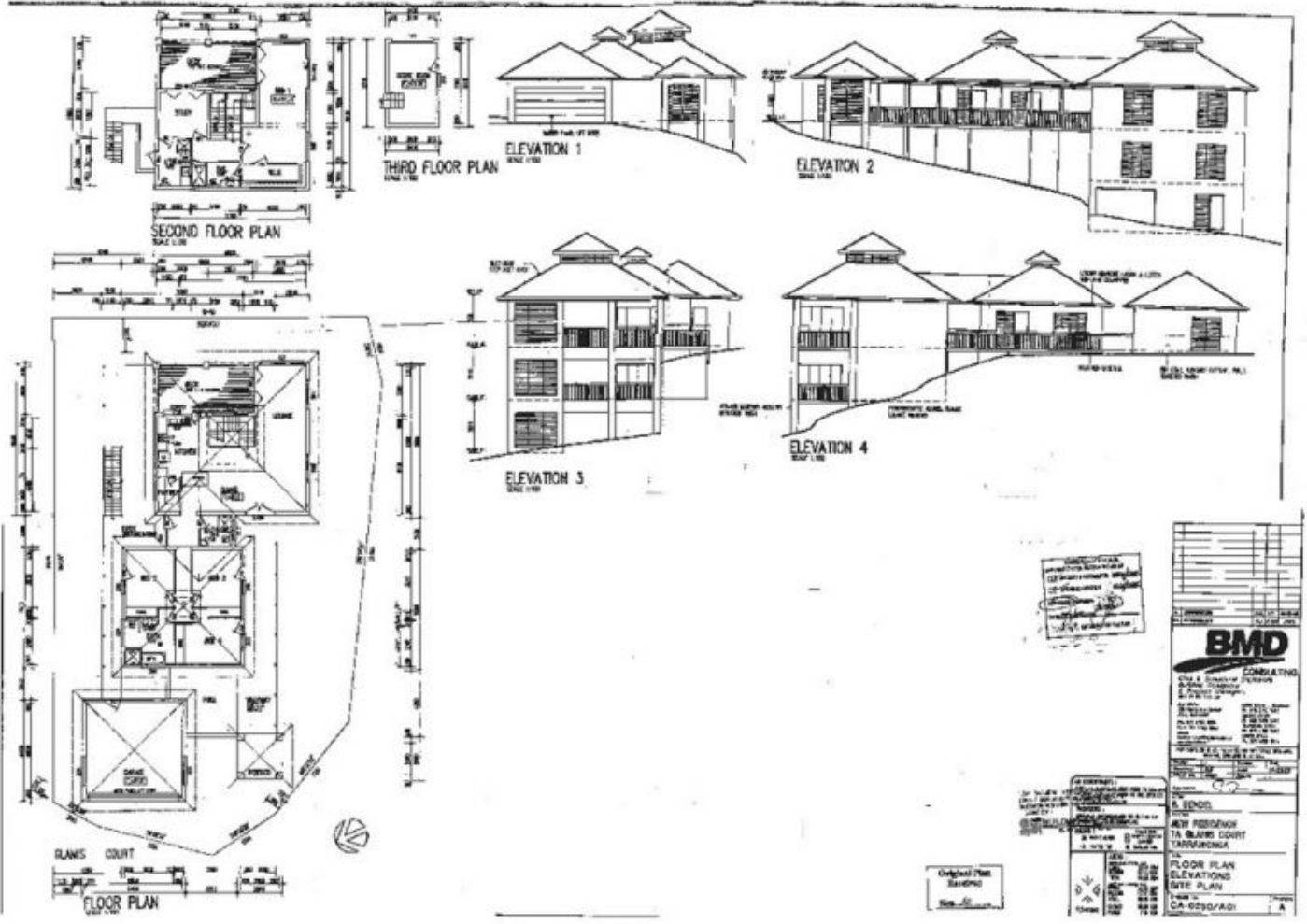
Features:

- Three levels of modern Pavilion living
- Magical panoramic views of Castle Hill, City, Port, and Ocean

Price : \$ 1,200,000
Land Size : 600 sqm
View : <https://www.kingsberry.com.au/sale/qld/townsville-district/castle-hill/residential/house/4326041>



Ben Kingsberry
07 4772 2022
0438 792 652
ben.kingsberry@tsvharcourts.com.au



UNIVERSITY OF CALIFORNIA
 ARCHITECTURAL BOARD
 10-10-1988
 10-10-1988

BMD	
CONSULTING	
Civil & Structural Engineers	
Professional Seal	
DATE	10-10-1988
PROJECT	NEW RESIDENCE
LOCATION	15 QUINN COURT
CITY	TAMPAHONKA
STATE	GA
COUNTY	COCONA
PROJECT NO.	10-10-1988
SCALE	AS SHOWN
DATE	10-10-1988
BY	[Signature]
CHECKED BY	[Signature]
APPROVED BY	[Signature]
SEAL NO.	10-10-1988
EXPIRES	10-10-1988
ISSUE	10-10-1988
REVISIONS	
NO.	DESCRIPTION
1	FLOOR PLAN
2	ELEVATIONS
3	SITE PLAN
4	CA-6030/AD1
5	A

Original Plan
 10-10-1988



Scale in metres. Indicative only. Dimensions are approximate. All information contained herein is gathered from sources we believe to be reliable. However we cannot guarantee its accuracy and interested parties should rely on their own enquiries.

First Floor	- 21 m ²
Second Floor	- 100 m ²
Third Floor	- 130 m ²
Garage	- 32 m ²
Deck	- 84 m ²

7a Glamis Court, Castle Hill